

UNITED REPUBLIC OF TANZANIA

MINISTRY OF LIVESTOCK AND FISHERIES

**THE ANNUAL FISHERIES STATISTICS REPORT (JANUARY- DECEMBER)
2019**

Prepared by:
Fisheries Department
Ministry of Livestock and fisheries
P.O. Box 2847
40487 DODOMA, TANZANIA

TABLE OF CONTENTS

1.0 INTRODUCTION.....	6
1.1 Overview of the Tanzania Fisheries Potential.....	6
1.2 Importance of the Fisheries Sector.....	11
2.0 ARTISAN FISHERIES SECTOR PERFORMARCE IN 2019.....	18
2.1 Fishing Effort in 2019.....	18
2.2 Fish Production.....	20
2.2.1 Lake Victoria.....	21
2.2.2 LAKE TANGANYIKA.....	27
2.2.3 Territorial Marine Water.....	33
2.2.4 Lake Nyasa.....	43
2.3 Export of fish and fishery Products.....	47
2.4 Import fisheries import data.....	62
3.0 conclusion and Way forward.....	63
4.0 WAY FORWARD.....	63

LIST OF TABLES

Table 1: The Distribution of water resources and estimated fisheries potential in 2019.....	6
Table 2:Major and minor water bodies.....	7
Table 3:List of potential exploited Fish Species in Marine Water.....	11
Table 4: List of the potential exploited fish Species in Inland water.....	12
Table 5: Estimation of fish consumption for 2019.....	17
Table 6: Grand summary of all Artisanal fisheries for 2019.....	18
<i>Table 7: Total fish production from all major water bodies in Tanzania (Marine and Inland) 2019.....</i>	<i>20</i>
Table 8: The status of artisanal fishing effort in Lake Victoria in 2019.....	21

Table 9: Estimated weight of fish caught by Region and Species for Lake Victoria, 2019.....	23
Table 10: Value of Fish caught in 000's Tshs for Lake Victoria by Region and species 2019.....	23
Table 11: Estimated weight of fish caught by District and Species for Lake Victoria 2019.....	23
Table 12: Value of Fish caught in 000's Tshs for Lake Victoria by District and species 2019.....	24
Table 13: Estimated weight of fish caught by Months and Species for Lake Victoria 2019.....	25
Table 14: Value of fish caught by Months and Species for Lake Victoria 2019.....	25
Table 15: Species Percentage Composition by Districts and Species for Lake Victoria, 2019.....	26
Table 16: Status of artisanal fishing effort in Lake Tanganyika for 2019.....	27
Table 17: The estimated total fish weight (000's Tshs) for Lake Tanganyika by Region and by species 2019.....	27
Table 18: The Value of catches on Lake Tanganyika as estimated by Region and species during 2019.....	28
Table 19: The estimated Fish weight (MT) for Lake Tanganyika by District and by species 2019.....	29
Table 20: The Value of catches on Lake Tanganyika as estimated by Districts and species during 2019.....	30
Table 21: The estimated fish weight (MT) for Lake Tanganyika by Months and by Districts 2019.....	31
Table 22: The Value of catches on Lake Tanganyika as estimated by Month and District during 2019.....	32
Table 23: Species percentage composition by District for Lake Tanganyika – 2019.....	32
Table 24: The status of artisanal fisheries effort in Territorial Marine Water 2019.....	33
Table 25: Estimated fish Production for Marine water by District 2019.....	34
Table 26: The Value of fish caught (000's Tshs) for Marine Territorial waters by District by Species, 2019.....	36
Table 27: Marine species percentage composition 2019.....	38
Table 28: Estimated Weight of fish (MT) for Tanga region by district and by month for 2019.....	39
Table 29: Value of fish caught (000's Tshs) for Tanga region by district and by month, 2019.....	39
Table 30: Weight of fish caught in metric tons for Coast region by district and by month for 2019.....	40
Table 31: The Value of fish caught (000's Tshs) for Pwani region by district and by month, 2019.....	41
Table 32: Estimated weight of fish (MT) for Dar es Salaam region by district and by month, 2019.....	41
Table 33: Value of fish in 000's tshs for Dar es Salaam region by district and by month for 2019.....	41
Table 34: Estimated weight of fish (MT) for Lindi region by district and by month, 2019.....	42
Table 35: Value of fish caught in 000's tshs for Lindi region by district and by month for 2019.....	42
Table 36: Estimated weight of fish (MT) for Mtwara region by district and by month, 2019.....	42
Table 37: Value of fish caught in 000's tshs for Lindi region by district and by month for 2019.....	43
Table 38: Summary of Lake Nyasa fisheries Statistics – 2019.....	43
Table 39: Weight of fish caught in metric tons for Lake Nyasa 2019.....	44
Table 40: Value of fish caught (000's Tshs) for Lake Nyasa by Region by month, 2019.....	45
Table 41: Estimated Weight (MT) for Lake Nyasa by species and by month, 2019.....	45
Table 42: Value of fish caught (000's Tshs) for Lake Nyasa by species and by month, 2019.....	46

Table 43: Trend of Fish Production - Tanzania (Fishers, Vessels, Weight and Value from Fresh and Marine water) from 2000 – 2019..	46
Table 44: Trend of Export of fish and fishery products from 2012-2019.....	57
Table 45: Grand summary of export of fish and fishery products for 2019.....	48
Table 46: Export by Destination for fish and fishery products for 2019.....	50
Table 47: <i>Export of fish and fishery products from Lake Victoria for 2019.....</i>	52
Table 48: Trend of Nile perch export performance from 2008– 2019.....	53
Table 49: Export of fish and fishery products from Marine waters for 2019.....	53
Table 50: Export of fish and fishery products by water bodies for Lake Tanganyika 2019.....	54
Table 51: Export of fish and fishery products by water bodies for Lake Nyasa 2019.....	55
Table 52: Export of fish and fishery products by water bodies for Lake Rukwa 2019.....	55
Table 53: Export of fish and fishery products by water bodies for Lake Manyara 2019.....	56
Table 54: List of Potential exporters of fish and fishery products for 2019.....	57
Table 55: Summary of Fish Import from 2012-2019.....	62
Table 56: Summary of Import of fish and fishery products by country of origin 2019.....	62

LIST OF FIGURES

Figure 1: Trend in the Percentage Growth of the fishery sector from 2013-2019.....15

Figure 2: Trend in the Percentage contribution of the fishery sector from 2012-2019.....16

1.0 INTRODUCTION

1.1 Overview of the Tanzania Fisheries Potential

Tanzania is a coastal state on the Western Indian Ocean situated in the Eastern part of Africa which has blessed with natural water resources ranges from inland to marine waters. Tanzania shares three major inland great lakes in Africa of Lake Victoria (shared by Kenya and Uganda), Lake Tanganyika and Lake Nyasa and other minor lakes, rivers, dams, ponds and wetlands. The country also has a coastline of about 1,242 kilometer long extending from North bordering with Kenya to South bordering with Mozambique. It has a territorial marine water of about 64,000 square kilometers and an Exclusive Economic Zone of 223,000 square kilometers. The distribution of major and minor water bodies in the country and its fisheries resource potential is as shown in the Table1 & 2 below. Either water resources below host a numerous of fish species.

Table 1: The Distribution of water resources and estimated fisheries potential

Water body	Total Area (km²)	Tanzanian share (area in km²)	Coverage (%)	Estimated Fisheries Resource Potential (Tones)
Lake Victoria	68,800	35,088	51	2,681,165
Lake Tanganyika	32,900	13,489	41	295,000
Lake Nyasa	30,800	5,760	20	168,000
Marine (Territorial sea)	64,000	64,000	100	30,000
EEZ	223,000	223,000	100	100,000
Other inland water bodies	5,000	5,000	100	Unknown
Total				3,274,165

istry of Livestock and Fisheries, 2019

Table 2: Distribution of Major and minor water bodies

Type of Water Body	Water Body	Region
Major Water Bodies	Indian Ocean	Mtwara,Lindi,DSM,Coast and Tanga
	Lake Victoria	Mwanza,Kagera and Mara
	Lake Tanganyika	Kigoma and Rukwa
	Lake Nyasa	Mbeya,Ruvuma and Iringa
	Lake Rukwa	Mbeya and Rukwa
Minor Water Bodies	Mtera Dam	Dodoma and Iringa
	Nyumba ya Mungu	Moshi and Arusha
	Lake Babati	Manyara
	Lake Basuto	
	Lake Kidawashi	
	Lake Kimotoro	
	Lake Tlawi	
	Lake Eyasi	Arusha
	Lake Natroni	
	Nondwa Dam	Dodoma
	Bahi Dam	
	Hombolo Dam	
	Kisaki Dam	
	Lake Kitangiri	Singida
	Mgori Dam	
	Mianji Dam	
	Chibumagwa Dam	
	Lake Singidani	
	Lake Kindai	
	Lake Kibwi	
	Igombe River	
	Ugala River	
	Maboha River	
Shela River		
Mwamapuli River		
Sola Dam	Shinyanga	

	Mhumbu Dam	
	Ning'wa Dam	
	Songwa Dam	
	Mwadui Dam	
	Igundu Dam	
	Kihanga Dam	
	Ngwazi Dam	
	Nzivi Dam	Iringa
	Mara River	
	Lubanda River	
	Kiarano Dam	Mara
	Simiyu River	
	Mirongo River	
	Malya Dam	Mwanza
	Lake Ikimba	Kagera
	Ruvuma River	
	Ruhusu River	Ruvuma
	Malagarasi River	
	Luche River	
	Nguluka Dam	Kigoma
	Kyungululu Dam	
	Mbaka River	
	Ruhuhu River	
	Songwe River	
	Kiwira River	Mbeya
	Lukuledi River	
	Matandi River	
	Mbwemkulu River	
	Umba River	Lindi
	Rufiji River	
	Wami River	
	Ruvu River	
	Lake Mteke	Pwani

	Lake Nyatupa	
	Lake Uba	
	Lugongwe Dam	
	Weme Dam	
	Luwe Dam	
	Ilu Dam	
	Zumbi Dam	
	Umwe Dam	
	Lungola Dam	
	Pangani River	
	Buhuli Dam	
	Zigi Dam	Tanga
	Mindu Dam	
	Kidatu Dam	
	Kilombero River	
	Mgeta River	
	Mkata River	
	Ruhuhu River	Morogoro

Source: Ministry of Livestock and Fisheries, 2019

1.2 Importance of the Fisheries Sector

The mentioned water resources harbor numerous fish species of great importance in proving food security and nutrition. It also offers an opportunity for fish farming and trade within and outside the country. The list of important fish species is as shown in the table 3 and 4 below.

Table 3: List of potential exploited Fish Species in Marine Territorial Water

No.	Common /English Name	Latin /Scientific Name	Swahili Name	Habitat Classification
1.	Thumbprint emperor	<i>Lethrinus rhodopterus</i>	Changu	Reef fish
2.	Peacock grouper	<i>Cephalopholis argus</i>	Chewa	Reef fish
3.	Yellowfin fusilier	<i>Caesio xaenithonotus</i>	Mbono	Reef Fish
4.	Dogtooth tuna	<i>Gymnasada nuda</i>	Jodari	Tuna and Tuna likes
5.	Slender silver-biddy	<i>Gerres oblongus</i>	Chaa	Coral reef
6.	Giant tiger prawn	<i>Penaeus bubulus</i>	Kamba mti	Blackish water
7.	Ornate spiny lobster	<i>Panulirus ornatus</i>	Kamba koche	Coral reef
8.	Blue- tail mullet	<i>Oedalechilus kesteveni</i>	Mkizi	Colar Reef
9.	Freckled gotfish	<i>Upeneus oligospirus</i>	Mkundaji	Medium Pelagic
10.	Japanese threadfin bream	<i>Nemipterus japonicus</i>	Koana	Medium Pelagic
11.	White-spotted octopus	<i>Octopus chromatus</i>	Pweza	Colar reef
12.	East African sardinella,	<i>Sardinella neglecta</i>	Dagaa-papa	Small pelagic
13.	Carolines parrotfish	<i>Carrotomus spinidens</i>	Pono	Bottom dwellers
14.	King fish	<i>Scomberomorus plurilineatus</i>	Nguru	Tuna and Tuna likes
15.	Indian Mackerel	<i>Restrelliger chrysozonus</i>	Vibua	Small pelagic
16.	Indian Squids	<i>Loligo duvauceli</i>	Ngisi	Colar reef
17.	Silky shark	<i>Carcharinus falciformis</i>	Dagaa-Papa	Small pelagic
18.	Commerson's anchony	<i>Anchoviella commersonii</i>	Dagaa-mcheli	Small Pelagic
19.	White-spotted spine foot	<i>Siganus oramin</i>	Tasi	Reef fish
20.	Obtuse barracuda	<i>Sphyraenella chrysotaenia</i>	Msusa/Mzia	Tuna and likes
21.	Tille travelly	<i>Caranx cynodon</i>	Kolekole	Tuna and likes
22.	Sleek unicornfish	<i>Naso hexacanthus</i>	Puju	reef fish
23.	Giant catfish	<i>Arius serratus</i>	Hongwe	Medium Pelagics (Blackish water)

24	Milk fish	<i>Chanos chanos</i>	Mwatiko	Medium Pelagics (Blackish water)
25	White-fin Wolf herring	<i>Chirocentrus dorab</i>	Mkonge	Medium Pelagics (Blackish water)
26	Cock grunter	<i>Pomadasys multimaculatum</i>	Karamamba	Medium Pelagics (Blackish water)
27	Black- barred halfbeak	<i>Hemiramphus commersoni</i>	Chuchunge	
28	Sword fish	<i>Xiphias gladius</i>	Nduwaro	Tuna and tuna likes
29	Unicorn leatherjacket	<i>Alutera monoceros</i>	Kikande	colar reef
30	Cobia	<i>Rachycentron canadum</i>	Songoro	Tuna and likes
31	Feathertail stringray	<i>Hypolophus sephen</i>	Taa	bottom dwellers
32	Jarboa terrapin	<i>Holocentrus servus</i>	Kui	Medium Pelagics (Blackish water)
33	Bengal snapper	<i>Lutjanus bengalensis</i>	Janja	Medium Pelagics (Blackish water)

Source: Ministry of Livestock and Fisheries, 2019

Table 4: List of the potential exploited fish Species in Inland water

No.	Common / FAO Name	Latin/ Scientific Name	Swahili/local Name	Water body
1	Nile perch	<i>Lates stappersii</i>	Mgebuka/Mkeke/Mvolo	Lake Tanganyika
2		<i>Lates anguistifrons</i>	Sangara	
3		<i>Lates mariae</i>	Sangara /Ng'omba	
4		<i>Lates microlepis</i>	Sangara/Nonzi	
5	Tilapia	<i>Oreochromis tanganicae (Serotheron)</i>	Ngege	
6		<i>Boulengerochromis microlepis</i>	Kuhe/Inkumpi	
7	Lake Tanganyika Sprat	<i>Stolothrissa tanganicae</i>	Dagaa	
8	Lake Tanganyika Sardine	<i>Limnothrissa miodon</i>	Dagaa/Lumbu	
9	Catfish	<i>Clarias gariepinus</i>	Kambale,Mumi	
10		<i>Labeo lineatus</i>	Mbiligi	
11		<i>Synodontis lacustricolus</i>	Ngogo/Gogogo/Kolokolo	
12		<i>Bagrus docmak</i>	Mbofu, Kibogobogo	
13		<i>Bathybates spp</i>	Mbanga/Lembela	
14		<i>Hemibates stenosoma</i>	Mpande	
15		<i>Hydrocynus vittatus (tiger fish)</i>	Manje	
16		<i>Malapterurus electricus</i>	Nyika	
17	Nile perch	<i>Lates niloticus</i>	Sangara	Lake Victoria
18	Tilapia	<i>Oreochromis niloticus</i>	Sato/Perege	
19		<i>Tilapi zillii</i>	Sato	

20		<i>Oreochromis rukwaensis</i>	Sasala	
22		<i>Oreochromis leucostictus</i>	Satu, Ngege	
23		<i>Balirius tanganicae</i>	Mbasa	
24		<i>Tilapia rendalli</i>	Kayabo	
25		<i>Cintharinus gibbosus</i>	Imbasa, Kukul	
26	Catfish	<i>Clarias theodora</i>	Kambale	
27		<i>Clarias liocephalus</i>	Kambale	
28		<i>Clarias gariepinus</i>	Kambale	
29	<i>Protopterus</i>	<i>Protopterus aethiopicus</i>	Kamongo, Kambale mamba	
30	Haplochromines	<i>Astatotilapia nubile</i>	Furu	
31		<i>Haplochromis pallidus</i>	Furu	
32		<i>Haplochromis obesus</i>	Furu	
33		<i>Haplochromis bloyeti</i>	Furu	
34	Spider prawns	<i>Nematopalaemon tenuipes</i>	Uduvi	
35	Lake Victoria sardine	<i>Ostrothrissa miodon</i>	Dagaa	
36	Lake Victoria sardine	<i>Rastrineobola argentae</i>	Dagaa	
37	Tilapia	<i>Oreochromis sp.</i>	Magege	Lake Nyasa
38		<i>Rhamphochromis</i>	Ngelwa	
39	Minor Cichlid	<i>Opsaridium sp.</i>	Mbelele/Mbasa	
40		<i>Haplochromis sp.</i>	Utapi	
41	Catfish	<i>Bathclarius nyasensis</i>		
42	Sardine	<i>Engraulicypris sp.</i>	Usipa/dagaa	
43		<i>Labeo</i>	Ningu	
44		<i>Synodontis</i>	Ngogo	
45		<i>Bagrus</i>	Mbofu	
46		<i>Oreochromis urolepis</i>	Perege	
47		synodontis	Kambale	
48		hydrocynus	Mchena	
49		<i>Clarias sp.</i>	Ngogo	
50		<i>Bagrus</i>	Vitoga	
51			Kimbumbu	
52			Sulusulu	
53			Mbapala	
54			Ningu	
55			Ngarara	

Source: Ministry of Livestock and Fisheries, 2019

The fisheries sector is among the important economic sectors in the country. It plays a significant role in social and economic development by contributing to the economic and social well-being of the country. The sector is a source of food security and nutrition, employment and income generation, recreation, tourism to attain sustainable National Development Goal. In 2019, the sector provided direct employment to about 202,053 and more than 4.5 million people indirectly depends on the fisheries related activities such fish traders processors and traders, fishing vessel manufacturers and suppliers, fishing gear menders, fish mongers and employees. The sector also contributed to the growth of the national economy. It contributed 1.71% to the National GDP the same as in the year 2018 and grew at 1.5% compared to 9.2% in 2018. The trend in growth and contribution of the sector to the National economy from 2012 to 2019 is shown in the figure 1 and 2 below. Either, reduction in growth of the sector for 2019 may be a result of the rapid growth in other economic sectors in the country such as communication sector.

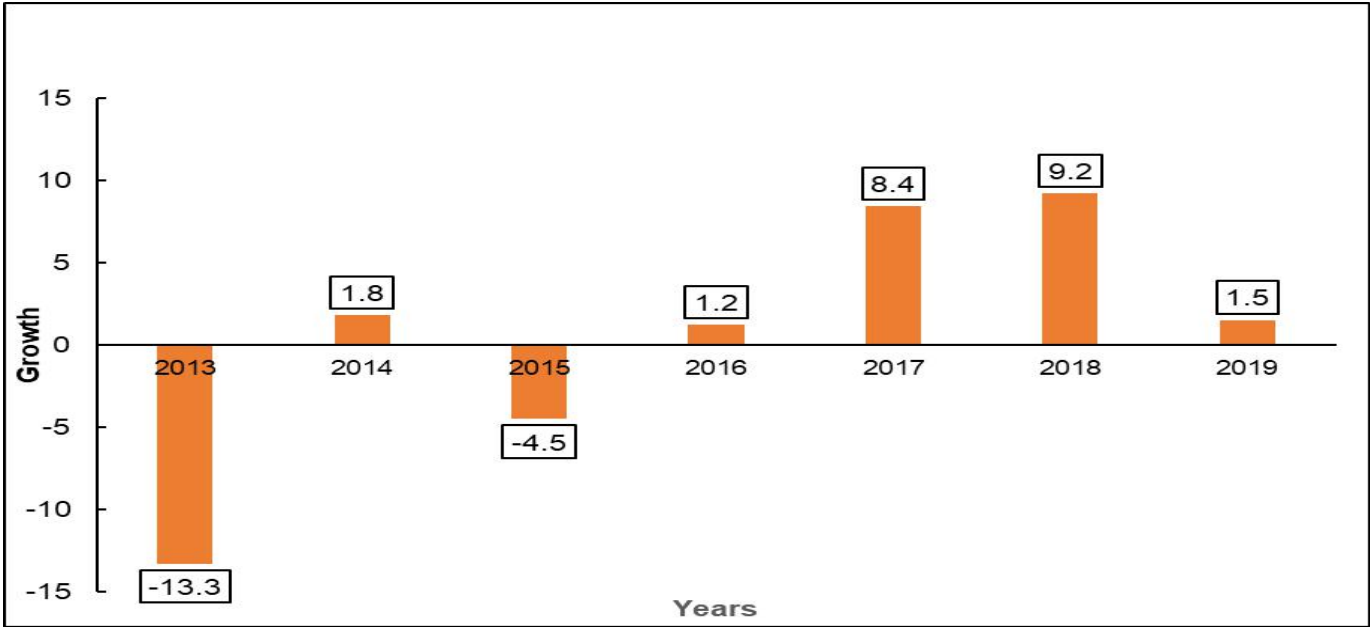


Figure 1: Trend in the Percentage Growth of the fishery sector from 2013-2019
Source: Ministry of Livestock and Fisheries, 2019

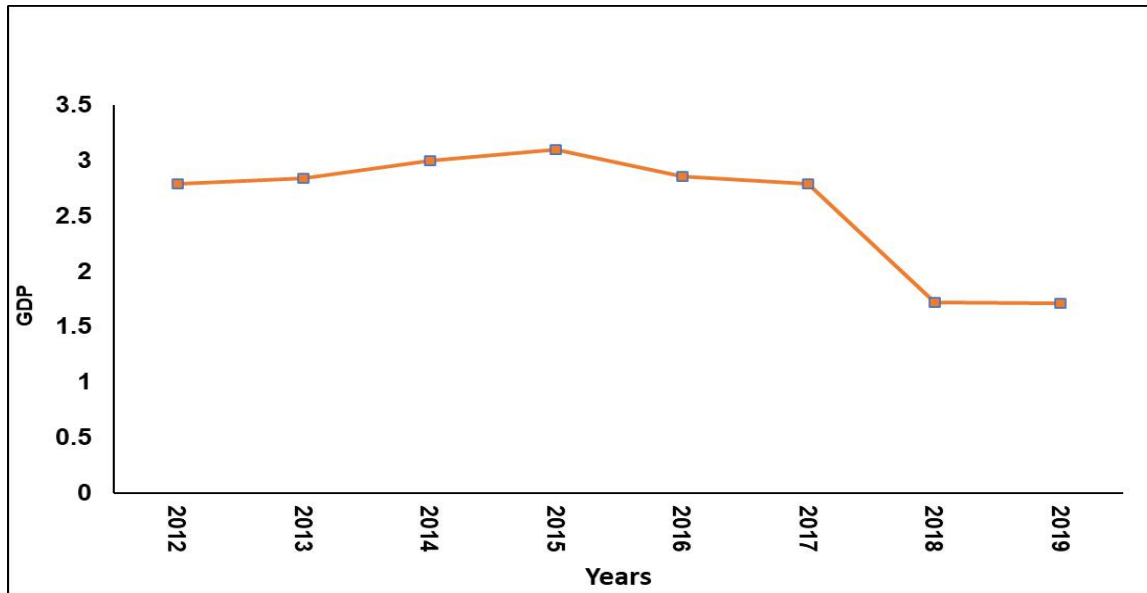


Figure 2: Trend in the Percentage contribution of the fishery sector from 2012-2019

Source: Ministry of Livestock and Fisheries, 2019

Fish and fishery products are a very valuable source of protein and essential micronutrients which is important for balanced nutrition and good health in the human's body. Currently, fish provides around 30% of the total animal protein and in 2019, the per capita fish consumption (kg/capita) was 7.9. The trend in per capita fish consumption for five year (2015-2019) stands at an average of 7.76. The fish consumption rate in the country is still low compared to the existing fisheries potentials. Therefore, awareness creation to the communities especially to the pastoralists is of grater importance. The trend in fish consumption from 2015 to 2019 is shown in the table 5 below.

Table 5: The trend of fish consumption (2015- 2019)

Category	2015	2016	2017	2018	2019
Population size	44,929,002	44,929,002.00	48,676,698.00	48,676,698.00	55,890,747.00
Imports of fish/fish products for direct human consumption(kg)	16,743,964.40	13,917,656.98	22,961,670.08	22,752,380.20	5,977.12
National fisheries production(kg) (capture production)	361,745,300.00	362,594,890.00	362,645,300.00	387,543,000.00	470,309,230
Aquaculture production (Tilapia & others)	3,632,835.00	5,677,364.00	11,000,000.00	16,288,000.00	18,081,600.00
Export of fish/fish production in kg	41,059,452.10	39,691,462.00	36,063,228.78	44,939,793.06	45,775,150
Aquaculture export (mainly prawns)	48,250.00	140,361.80	200,887.60	244,000.00	336,400.00
National fish consumption (kg)	341,914,397.30	342,358,087.18	385,240,553.70	370,209,297.14	442,285,257.12
Per capital fish consumption (kg)	7.6	7.6	7.91	7.84	7.91

Source: Ministry of Livestock and Fisheries, 2019

2.0 ARTISAN FISHERIES SECTOR PERFORMARCE IN 2019

The small scale fishery (artisanal) in the country contribute more than 90 percent of the total annual fish landings. The performance of the fishery can be determined by assessing its fishing efforts, fish catch, fish export and import. This information is of great important in planning and decision making.

2.1 Fishing Effort in 2019

Fishing effort is a great determinant for the performance of a certain fishery. It explains combination of fishers, fishing vessels, fishing gears and time in a certain fishery. Other factors to support the explanation of fisheries sector performance of fishery include fish land-based facilities such as fish landing sites, fish market and cold store facilities. In 2019, number of fishing efforts (number of fishers, fishing vessels, fishing gear and fish land based facilities (fish landing sites) remained as it was in 2018. This is because there is no Fisheries Frame Survey conducted in any water body since 2018. However, the description on the general status of the small scale fishery fishing effort in the country is presented in table 6.

Table 6: Status of fishing effort in 2019

Item	Marine	Lake Victoria	Lake Tanganyika	Lake Nyasa	Lake Rukwa	Nyumba ya Mungu	Mtera Dam	Minor Water	Total
Number of landing site	274	642	239	114	20	21	28	18	1,356
Number of fishers	53,035	109,397	26,634	5,550	3,428	783	2,369	879	202,053
Number of fishing vessels	9,242	31,773	11,506	2,632	1,786	432	1,238	321	58,930
Fishing Gears									
Number of gill nets	66,479	361,235	31,806	11,582	21,281	856	20,567	1912	515,718
Number of shark nets	3,677	-	-	-	-	-	-	-	3,677
Number of beach seins	231	1260	-	12	344	80	493	207	2,627
Number of boat		531							531

Item	Marine	Lake Victoria	Lake Tanganyika	Lake Nyasa	Lake Rukwa	Nyumba ya Mungu	Mtera Dam	Minor Water	Total
seins									
Number of cast nets	453	146	-	4	-	2	-	5	610
Number of appolo lift nets		-	66	-	-	-	-	-	66
Number of lift nets		9	1,892	-	-	-	0	-	1,699
Number of lamps		59,050	23,321	-	-	-	-	-	11,929
Number of ring nets	525	-	644	1	-	-	438	-	1608
Number of dagaa seine	90	11,460	-	728	-	-	-	-	12,188
Number of hand lines	7,435	17,957	15,500	284	15,000	5	22,578	5,007	81,314
Number of long lines (Hooks)	6,453	8,163,119	537,126	157,648	885	949	23,960	0	8,353,614
Number of traps	234	1,175	0	71	2,820	2,677	2,881	445	10,325
Number of spears	1,337	-	-	-	-	-	0	-	1,337
Number of purse seines	150	-	-	1,120	-	-	-	-	1,170
Number of trawlers	0	-	-	-	-	-	-	-	
Other gears (handheld nets & monofilaments, mosquito nets, seine nets, small seines)	36	22,064	-	-	-	-	-	-	22,100
Engines									
No. of outboard engines	1,580	11,067	1689					-	14,336
No. of inboard engines	105		-	-	-	-	-	-	105

Source: Ministry of Livestock and Fisheries, 2019

2.2 Fish Production

Basing on the above fishing effort, the annual fish landings in 2019 was 470,309.23 MT worth 2.210 Trillion Tshs compared to 376,352.71 worth 1.77 Trillion Tshs landed in 2018. The big share of fish catch observed in Lake Victoria for 57.61 percent of the total fish landings. The catch and percentage share of each water body is described in table 7 below.

Table 7: Total fish production from all major water bodies in Tanzania (Marine and Inland) 2019

Water bodies	Numbers		Numbers		Production % share per water body
	Fishers	Fishing Vessels	Catches (MT)	Values (Tsh.s '000)	
Lake Victoria	109,397	31,773	270,968.03	1,273,549,752.65	57.61
Lake Tanganyika	26,612	11,506	70,161.79	329,760,392.11	14.92
Lake Nyasa	5,550	2,632	27,900.03	131,130,119.45	5.93
Lake Rukwa	3,428	1,786	14,882.59	69,948,177.35	3.16
Mtera Dam	2,369	1,238	7,905.88	37,157,655.65	1.68
Nyumba ya Mungu Dam	783	432	14,948.42	70,257,552.24	3.18
Minor water bodies	879	321	2,565.99	12,060,153.04	0.55
Small scale Marine	53,035	9,242	60,976.51	286,589,597.96	12.97
Total	202,053	58,930	470,309.23	2,210,453,400.44	100

Source: Ministry of Livestock and Fisheries, 2019

The description on fisheries status, fishing efforts and fish production by water body, by region, by district, by month and by species are indicated below (Tables 8-43).

2.2.1 Lake Victoria

Table 8: The status of fishing effort in Lake Victoria in 2019

Item/Region	Geita	Kagera	Mara	Mwanza	Simiyu	Totals
Total number of Landing sites	73	167	168	223	10	641
Total number of Fishers	8,269	23,469	25,135	48,138	4,386	109,397
Total number of Fishing vessels	2,755	7,247	7,251	13,560	960	31,773
Fishing gears						
Number of Gill nets	21370	104,730	73,746	148,269	13,120	361,235
Number of Traps	464	28	133	550	0	1,175
Number of hand lines	562	1,729	7,021	8,339	306	17,957
Number of Long lines	415,264	1,437,946	2,464,663	3,584,271	260,975	8,163,119
Number of Beach seines	112	322	270	443	113	1,260
Number of Scoop nets	1	358	0	2	0	361
Number of cast nets	121	8	0	17	0	146
Number of Lift nets	0	0	0	7	2	9
Number of Small seine (Dagaa seine)	722	2,101	3,336	5,050	251	11,460
Engines						
Number of Outboard engines	201	3,259	1,646	5,612	365	11,083
Number of Inboard engines		0	0	0		0

Source: Ministry of Livestock and Fisheries, 2019

Table 9: Weight (MT) of fish by Region and by Species for Lake Victoria, 2019

Region/Species	NP	DA	CG	PA	TL	HA	BD	OT	Total
Kagera	19,850.60	21,117.70	89.51	43.08	205.55	970.59	79.25	44.13	42,400.41
Mwanza	49,737.26	47,458.07	1328.43	1141.43	4624.27	22,030.41	596.4	351.29	127,267.56
Geita	3,768.39	1,647.75	98.39	712.37	8,859.68	8,535.00	58.24	164.47	23,844.29
Mara	12,798.13	51,611.40	430.91	347.31	1645.13	2,248.11	196.93	669.11	69,947.03
Simiyu	5,554.96	513.24	44.26	485.25	400.53	420.94	35.84	53.72	7,508.74
Total	91,709.34	122,348.16	1,991.50	2,729.44	15,735.16	34,205.05	966.66	1,282.72	270,968.03

(NP = Nile perch; DA = Dagaa; CG= *Clarias gariepinus* TL = Tilapia; HA = Haplochromines, BD = *Bagrus docmack*; PA = *Protopterus aethiopicus*; OT = Other fish species.)

Source: Ministry of Livestock and Fisheries, 2019

Table 10: Value of fish (000's Tshs) for Lake Victoria by Region and species 2019

Region/Species	NP	DA	CG	PA	TL	HA	BD	OT	Total
Kagera	93,297,783.15	99,253,158.97	420,715.21	202,478.34	966,090.81	4,561,800.66	372,464.83	207,406.27	199,281,890.24
Mwanza	233,765,112.58	223,052,876.73	6,243,632.63	5,364,728.25	21,734,064.82	103,543,111.22	2,803,071.34	1,650,964.72	598,157,560.25
Geita	17,711,412.15	7,744,430.89	462,467.25	3,348,122.00	41,640,517.60	40,114,484.02	273,743.78	773,035.10	112,068,212.71
Mara	60,151,174.95	242,573,597.17	2,025,270.75	1,632,336.08	7,732,138.13	10,566,130.86	925,530.15	3,144,831.37	328,751,006.41
Simiyu	26,108,333.39	2,412,248.61	208,001.95	2,280,656.64	1,882,469.10	1,978,428.35	168,470.21	252,461.62	35,291,062.97
Total	431,033,816.22	575,036,312.37	9,360,087.79	12,828,321.31	73,955,280.46	160,763,955.11	4,543,280.31	6,028,699.08	1,273,549,750.75

Source: Ministry of Livestock and Fisheries, 2019

Table 11: Weight (MT) of fish by District and Species for Lake Victoria 2019

District/Species	NP	DA	CG	PA	TL	HA	BD	OT	Total
Bukoba	2,324.45	133.82	3.05	1.46	129.26	1.46	5.36	3.64	2,602.50
Muleba	17,526.15	20,983.88	86.46	41.62	76.29	969.13	73.89	40.49	39,797.90
Ilemela	11,435.99	5,439.77	48.56	42.80	59.07	5,587.15	54.33	60.46	22,728.12
Sengerema	13,190.57	3,734.50	498.35	82.43	862.23	11,562.40	66.09	102.71	30,099.27
Ukerewe	16,397.00	34,846.33	637.69	282.59	3,036.33	2,340.65	63.79	94.07	57,698.43

Misungwi	6,496.24	636.21	67.24	504.83	370.05	295.12	32.65	60.08	8,462.42
Magu	2,217.46	2,801.26	76.59	228.78	296.59	2,245.14	379.54	33.97	8,279.32
Chato	1,315.98	255.16	38.18	223.70	8,358.27	1,270.24	32.73	21.28	11,515.55
Geita	2,452.41	1,392.59	60.21	488.67	501.41	7,264.76	25.51	143.19	12,328.75
Bunda	2,458.98	4,985.95	64.66	272.46	608.83	329.72	60.08	449.23	9,229.91
Musoma	7,882.48	35,861.52	257.53	15.52	658.22	866.86	61.54	152.64	45,756.32
Rorya	2,456.67	10,763.93	108.72	59.33	378.08	1,051.53	75.31	67.24	14,960.80
Simiyu/busega	5,554.96	513.24	44.26	485.25	400.53	420.94	35.84	53.72	7,508.74
Total	91,709.32	122,348.15	1,991.51	2,729.43	15,735.17	34,205.10	966.66	1,282.70	270,968.03

Source: Ministry of Livestock and Fisheries, 2019

Table 12: Value of fish (000's Tshs) for Lake Victoria by District and species 2019

District/ Species	NP	DA	CG	PA	TL	HA	BD	OT	Total
Bukoba	10,924,894.97	628,933.78	14,350.56	6,877.44	607,543.32	6,877.44	25,181.18	17,112.37	12,231,771.06
Muleba	82,372,888.18	98,624,225.19	406,364.65	195,600.90	358,547.49	4,554,923.22	347,283.65	190,293.90	187,050,127.19
Ilemela	53,749,144.58	25,566,910.97	228,255.20	201,178.66	277,642.80	26,259,582.92	255,331.74	284,141.17	106,822,188.05
Sengerema	61,995,682.74	17,552,147.96	2,342,228.69	387,411.08	4,052,491.02	54,343,257.94	310,622.02	482,720.49	141,466,561.93
Ukerewe	77,065,887.09	163,777,736.04	2,997,155.94	1,328,158.25	14,270,742.54	11,001,034.19	299,791.41	442,105.68	271,182,611.15
Misungwi	30,532,314.48	2,990,170.20	316,037.33	2,372,716.86	1,739,234.22	1,387,076.80	153,469.81	282,354.12	39,773,373.82
Magu	10,422,083.69	13,165,911.56	359,955.47	1,075,263.40	1,393,954.24	10,552,159.37	1,783,856.36	159,643.26	38,912,827.35
Chato	6,185,093.16	1,199,273.94	179,463.28	1,051,381.90	39,283,884.20	5,970,105.46	153,848.88	100,020.72	54,123,071.54
Geita	11,526,318.99	6,545,156.94	283,003.96	2,296,740.10	2,356,633.40	34,144,378.56	119,894.90	673,014.38	57,945,141.24
Bunda	11,557,186.24	23,433,983.91	303,907.04	1,280,557.70	2,861,502.50	1,549,698.47	282,354.12	2,111,374.14	43,380,564.12
Musoma	37,047,633.08	168,549,163.24	1,210,375.32	72,944.19	3,093,656.72	4,074,260.55	289,231.56	717,419.90	215,054,684.56
Rorya	11,546,355.63	50,590,450.02	510,988.39	278,834.17	1,776,978.92	4,942,171.84	353,944.48	316,037.33	70,315,760.78
Simiyu/Bus ega	26,108,333.39	2,412,248.61	208,001.95	2,280,656.64	1,882,469.10	1,978,428.35	168,470.21	252,461.62	35,291,069.87
Total	431,033,816.22	575,036,312.37	9,360,087.79	12,828,321.31	73,955,280.46	160,763,955.11	4,543,280.31	6,028,699.08	1,273,549,752.65

Source: Ministry of Livestock and Fisheries, 2019

Table 13: Weight (MT) of fish by Months and Species for Lake Victoria 2019

Species/ Month	Jan	Feb	March	Apr	May	June	July	Aug	Sept	Oct	Nov	Dec	Total
Nile perch	8,249.82	5,544.21	8,146.96	5,828.68	9,290.27	4,608.45	1,804.56	8,247.64	7,188.79	8,133.01	9,540.90	6,903.99	83,487.27
Tilapiines	760.57	8,957.01	932.00	1,059.08	5,590.61	1,050.28	994.75	368.23	936.69	341.60	365.26	499.78	21,855.86
Dagaa	12,704.21	11,557.35	13,893.01	143.31	9,968.09	8,059.64	1,436.12	12,679.29	10,684.54	22,995.33	40,752.49	11,589.68	156,463.04
Haplochromi nes	700.45	859.77	664.91	830.40	517.60	72.58	698.85	751.89	481.59	769.71	607.08	87.77	7,042.60
Bagrus	67.54	63.08	37.71	29.60	73.37	80.69	69.72	28.46	37.60	23.31	15.20	64.12	590.40
Clarias	16.57	11.99	24.35	13.60	38.97	56.11	37.83	139.77	89.82	41.26	52.57	37.60	560.44
Protopterus	50.63	33.25	32.00	89.59	53.14	44.68	24.00	46.17	58.40	17.61	71.65	33.14	554.26
Others	25.14	-	60.23	58.29	29.72	24.91	10.85	25.03	12.57	48.58	100.57	18.29	414.17
Total	22,574.93	27,026.69	23,791.03	8,052.55	25,561.78	13,997.34	5,076.68	22,286.47	19,490.02	32,370.45	51,505.72	19,234.36	270,968.03

Source: Ministry of Livestock and Fisheries, 2019

Table 14: Value of fish (000's Tshs) by Months and Species for Lake Victoria 2019

Species/ Month	Jan	Feb	March	Apr	May	June	July	Aug	Sept	Oct	Nov	Dec	Total
Nile perch	33,652,450. 46	22,615, 848.97	37,332,199 .99	26,709,18 1.73	42,571,255 .77	21,117,52 1.37	8,269,161 .40	37,793,576 .26	32,941,53 1.90	37,268,309 .07	43,719,721 .32	31,636,48 1.22	375,627,239.47
Tilapiines	3,102,499.9 1	36,537, 239.25	4,270,741. 69	4,852,934 .64	25,618,060 .91	4,812,767 .15	4,558,250 .85	1,687,348. 83	4,292,213 .23	1,565,327. 64	1,673,732. 73	2,290,123 .04	95,261,239.88
Dagaa	51,822,470. 67	47,144, 478.88	63,662,592 .34	656,924.3 9	45,677,349 .70	36,932,09 6.18	6,580,765 .18	58,100,939 .77	48,960,34 8.18	105,372,89 1.72	186,742,17 2.87	53,108,02 1.16	704,761,051.03
Haplochr omines	2,857,283.5 4	3,507,1 53.54	3,046,863. 90	3,805,018 .75	2,371,819. 63	332,547.0 2	3,202,401 .65	3,445,396. 64	2,206,855 .36	3,527,093. 23	2,781,873. 68	402,198.6 0	31,486,505.54
Bagrus	275,518.77	257,337 .33	172,714.97	135,637.2 9	336,212.90	369,729.4 5	319,454.6 2	130,400.33	172,296.0 2	106,834.00	56,907,227 .33	293,688.7 7	59,477,051.78
Clarias	67,597.67	48,950. 04	111,337.79	62,319.84	178,789.85	257,134.7 8	173,343.4 1	640,480.33	411,625.1 3	189,054.29	240,900.21	172,296.0 2	2,553,829.35

Propter us	206,522.53	135,661 .53	146,582.54	410,577.7 4	243,256.84	204,765.1 7	109,976.1 8	211,573.22	267,608.7 1	80,649.20	328,357.32	151,871.8 7	2,497,402.99
Others	102,561.98	-	275,987.84	267,085.0 1	136,160.99	114,165.7 5	49,751.13	114,689.45	57,606.57	222,570.84	460,852.57	84,000.85	1,885,432.98
Total	92,086,905. 53	110,246 ,669.55	109,019,02 1.07	36,899,67 9.39	117,132,90 6.59	64,140,72 6.88	23,263,10 4.29	102,124,40 4.82	89,310,08 4.97	148,332,73 0.00	292,854,83 8.02	88,138,68 1.54	1,273,549,752.6 5

Source: Ministry of Livestock and Fisheries, 2019

Table 15: Species Percentage Composition by Districts and Species for Lake Victoria, 2019

District/species	NP	DA	CG	PA	TL	HA	BD	OT	Total
Bukoba	0.86	0.05	0.00	0.00	0.05	0.00	0.00	0.00	0.96
Muleba	6.47	7.74	0.03	0.02	0.03	0.36	0.03	0.01	14.69
Ilemela	4.22	2.01	0.02	0.02	0.02	2.06	0.02	0.02	8.39
Sengerema	4.87	1.38	0.18	0.03	0.32	4.27	0.02	0.04	11.11
Ukerewe	6.05	12.86	0.24	0.10	1.12	0.86	0.02	0.03	21.29
Misungwi	2.40	0.23	0.02	0.19	0.14	0.11	0.01	0.02	3.12
Magu	0.82	1.03	0.03	0.08	0.11	0.83	0.14	0.01	3.06
Chato	0.49	0.09	0.01	0.08	3.08	0.47	0.01	0.01	4.25
Geita	0.91	0.51	0.02	0.18	0.19	2.68	0.01	0.05	4.55
Bunda	0.91	1.84	0.02	0.10	0.22	0.12	0.02	0.17	3.41
Musoma	2.91	13.23	0.10	0.01	0.24	0.32	0.02	0.06	16.89
Rorya	0.91	3.97	0.04	0.02	0.14	0.39	0.03	0.02	5.52
Simiyu/Busega	2.05	0.19	0.02	0.18	0.15	0.16	0.01	0.02	2.77
Total	33.85	45.15	0.73	1.01	5.81	12.62	0.36	0.47	100.00

Source: Ministry of Livestock and Fisheries, 2019

2.2.2 LAKE TANGANYIKA

Table 16: Status of artisanal fishing effort in Lake Tanganyika for 2019

Item/District	Kigoma (MC & DC)	Mpanda DC	Nkasi DC	Sumbawanga DC	Total
Number of landing sites	87	20	114	18	239
Number of Fishers	10,573	2,483	10,733	2,823	26,612
Number of Fishing vessels	4,782	1,018	4,683	1,023	11,506
Number of vessels sails	-	518	-	-	518
Number of vessels paddled	-	26	-	199	225
Number of vessels with engine	756	80	640	213	1,689
Number of Transport vessels	76	-	-	16	92
Number of Outboard engines	755	14	154	79	1,002
Number of Lamps	13,242	1,340	7,691	1,048	23,321
Fishing gears					
Normal Lift nets	1,302	162	397	32	1,892
Apollo lift nets	66	-			66
Gill nets	14,579	6,109	9,401	1,717	31,806
Hand lines	1,552	13,411	153	371	2,194
Scoop nets	60	0	0	0	60
Ring nets	115	47	337	145	644
Long lines	78,171	191,428	245,028	22,499	537,126
Beach Seine nets	58	1	3	4	66

Source: Ministry of Livestock and Fisheries, 2019

Table 17: The total fish weight (MT) for Lake Tanganyika by Region and by species 2019

Species/Region	Kigoma	Rukwa	Katavi	Total
<i>Stolothrissa tanganicae (Dagaa)</i>	8,938.42	11,795.75	10,260.58	30,994.75
<i>Limnothrissa miodon (Dagaa/Lumbu)</i>	358.03	5,796.67	160.05	6,314.75
<i>Clarias gariepinus (Kambale/Mumi)</i>	137.93	325.92	114.69	578.54

<i>Auchenoglanis occidentalis</i> (Kavungwe)	73.32	385.94	17.3	476.56
<i>Boulengerochromis microlepsi</i> (Kuhe/Inkumpi)	92.97	44.62	136.7	274.29
<i>Tylochromis Polylepis</i> (Kungura)	130.19	615.1	54.64	799.93
<i>Hydrocynus vittatus</i> (tiger fish) (Manje)	29.95	3.78	51.61	85.34
<i>Haplochromis spp</i> (Masembe)	107.63	53.13	42.96	203.72
<i>Bathybatus minor</i> (Mbanga/Lembela)	57.11	551.71	79.98	688.8
<i>Labeo lineatus</i> (Mbilingi)	78.95	116.71	33.21	228.87
<i>Bagrus docmak</i> (Mbofu/Kibogobogo)	44.63	13.51	2,087.49	2,145.63
<i>Lates stappersii</i> Mgebuka/Mvolo	6,848.66	11,679.20	3,736.97	22,264.83
<i>Hemibates stenosoma</i> (Mpande)	69.24	631.92	151.8	852.96
<i>O.tanganicae</i> (Serotheron) (Ngege)	70.89	758.03	68.95	897.87
<i>Synodontis lacustricolus</i> Ngogo/Kolokolo	133.32	62.62	43.63	239.57
<i>Malapterurus electricus</i> (Nyika)	41.2	343.67	55.82	440.69
<i>Lates anguistifrons</i> (Sangara)	83.04	253.67	83.51	420.22
<i>Lates mariae</i> (Sangara/Ng'omba)	58.87	398.35	107.35	564.57
<i>Lates microlepis</i> Sangara/Nonzi	67.29	346.33	61.53	475.15
Others	471.64	651.82	91.29	1,214.75
Total	17,893.31	34,828.42	17,440.06	70,161.79

Source: Ministry of Livestock and Fisheries, 2019

Table 18: The value of fish (000's Tshs) for Lake Tanganyika by Region and species during 2019.

Species/Region	Kigoma	Rukwa	Katavi	Total
<i>Stolothrissa tanganicae</i> (Dagaa)	42,010,549.15	55,440,033.88	48,224,700.22	145,675,283.26
<i>Limnothrissa miodon</i> (Dagaa/Lumbu)	1,682,749.93	27,244,347.96	752,241.72	29,679,339.61
<i>Clarias gariepinus</i> (Kambale/Mumi)	648,262.33	1,531,804.83	539,033.18	2,719,100.35
<i>Auchenoglanis occidentalis</i> (Kavungwe)	344,622.22	1,813,937.81	81,343.27	2,239,903.30
<i>Boulengerochromis microlepsi</i> (Kuhe/Inkumpi)	436,916.62	209,708.69	642,504.52	1,289,129.83
<i>Tylochromis Polylepis</i> (Kungura)	611,909.06	2,890,988.09	256,843.75	3,759,740.90
<i>Hydrocynus vittatus</i> (tiger fish) (Manje)	140,784.24	17,781.49	242,562.10	401,127.84
<i>Haplochromis spp</i> (Masembe)	505,897.51	249,731.15	201,918.70	957,547.37

<i>Bathybatus minor</i> (Mbunga/Lembela)	268,415.84	2,593,049.34	375,895.06	3,237,360.23
<i>Labeo lineatus</i> (Mbilingi)	371,040.43	548,516.64	156,081.97	1,075,639.04
<i>Bagrus docmak</i> (Mbofu/Kibogobogo)	209,765.15	63,505.32	9,811,205.45	10,084,475.91
<i>Lates stappersii</i> Mgebuka/Mvolo	32,188,674.82	54,892,251.08	17,563,765.90	104,644,691.80
<i>Hemibates stenosoma</i> (Mpande)	325,429.50	2,970,016.94	713,461.14	4,008,907.57
<i>O.tanganicae</i> (Serotheron) (Ngege)	333,219.49	3,562,733.28	324,074.72	4,220,027.48
<i>Synodontis lacustricolus</i> Ngogo/Kolokolo	626,642.31	294,326.00	205,023.41	1,125,991.71
<i>Malapterurus electricus</i> (Nyika)	193,620.67	1,615,236.72	262,319.32	2,071,176.71
<i>Lates anguistifrons</i> (Sangara)	390,289.60	1,192,263.04	392,491.12	1,975,043.76
<i>Lates mariae</i> (Sangara/Ng'omba)	276,713.85	1,872,249.81	504,542.73	2,653,506.41
<i>Lates microlepis</i> Sangara/Nonzi	316,284.73	1,627,542.64	289,189.13	2,233,016.50
Others	2,216,759.13	3,063,553.22	429,070.19	5,709,382.54
Total	84,098,546.58	163,693,577.93	81,968,267.60	329,760,392.11

Source: Ministry of Livestock and Fisheries, 2019

Table 19: The fish weight (MT) for Lake Tanganyika by District and by species 2019

Species/District	Kigoma DC	Kigoma MC	Uvinza DC	Nkasi MC	Tanganyika	Karambo	Total
<i>Stolothrissa tanganicae</i> (Dagaa)	2,922.69	3,376.78	2,638.95	11,795.75	3,496.98	6,763.60	30,994.74
<i>Limnothrissa miodon</i> (Dagaa/Lumbu)	154.45	190.09	13.49	5,796.67	12.31	147.74	6,314.75
<i>Clarias gariepinus</i> (Kambale/Mumi)	111.07	19.47	7.39	325.92	10.99	103.70	578.53
<i>Auchenoglanis occidentalis</i> (Kavungwe)	37.81	23.25	12.26	385.94	14.47	2.83	476.58
<i>Boulengerochromis microlepsi</i> (Kuhe/Inkumpi)	37.97	40.37	14.63	44.62	29.64	107.06	274.28
<i>Tylochromis Polylepis</i> (Kungura)	109.86	12.66	7.67	615.10	5.10	49.54	799.94
<i>Hydrocynus vittatus</i> (tiger fish) (Manje)	18.59	7.58	3.78	3.78	33.16	18.45	85.35
<i>Haplochromis spp</i> (Masembe)	92.02	4.37	11.24	53.13	17.27	25.69	203.73
<i>Bathybatus minor</i> (Mbunga/Lembela)	13.91	25.69	17.51	551.71	26.92	53.06	688.80
<i>Labeo lineatus</i> (Mbilingi)	47.01	29.32	2.62	116.71	19.71	13.50	228.86
<i>Bagrus docmak</i> (Mbofu/Kibogobogo)	29.64	13.48	1.51	13.51	23.47	2,064.02	2,145.63

<i>Lates stappersii</i> Mgebuka/Mvolo	3,278.34	3,392.13	178.19	11,679.20	846.92	2,890.05	22,264.83
<i>Hemibates stenosoma</i> (Mpande)	24.19	23.23	21.82	631.92	26.59	125.21	852.96
<i>O.tanganicae</i> (Serotheron) (Ngege)	39.93	26.59	4.37	758.03	11.10	57.85	897.88
<i>Synodontis lacustricolus</i> Ngogo/Kolokolo	50.91	15.90	66.51	62.62	26.56	17.07	239.57
<i>Malapterurus electricus</i> (Nyika)	10.38	19.60	11.22	343.67	6.26	49.56	440.68
<i>Lates angustifrons</i> (Sangara)	21.20	13.50	48.34	253.67	3.99	79.52	420.22
<i>Lates mariae</i> (Sangara/Ng'omba)	40.45	15.85	2.57	398.35	19.96	87.39	564.58
<i>Lates microlepis</i> Sangara/Nonzi	38.61	27.19	1.49	346.29	25.71	35.82	475.11
Others	363.53	106.30	1.81	651.82	46.55	44.74	1,214.76
Total	7,442.57	7,383.35	3,067.39	34,828.42	4,703.66	12,736.40	70,161.79

Source: Ministry of Livestock and Fisheries, 2019

Table 20: The Value of fish (000's Tshs) in Lake Tanganyika by Districts and species during 2019.

Species/Region	Kigoma DC	Kigoma MC	Uvinza DC	Nkasi MC	Tanganyika	Karambo	Total
<i>Stolothrissa tanganicae</i> (Dagaa)	13,736,624.68	15,870,855.12	12,403,069.35	55,440,033.88	16,435,798.47	31,788,901.75	145,675,283.26
<i>Limnothrissa miodon</i> (Dagaa/Lumbu)	725,936.40	893,421.11	63,392.42	27,244,347.96	57,860.41	694,381.31	29,679,339.61
<i>Clarias gariepinus</i> (Kambale/Mumi)	522,041.98	91,504.11	34,716.24	1,531,804.83	51,651.00	487,382.18	2,719,100.35
<i>Auchenoglanis occidentalis</i> (Kavungwe)	177,702.01	109,285.60	57,634.61	1,813,937.81	68,021.26	13,322.01	2,239,903.30
<i>Boulengerochromis microlepsi</i> (Kuhe/Inkumpi)	178,435.84	189,725.68	68,755.10	209,708.69	139,316.57	503,187.95	1,289,129.83
<i>Tylochromis Polylepis</i> (Kungura)	516,340.61	59,497.43	36,071.02	2,890,988.09	23,990.90	232,852.85	3,759,740.90
<i>Hydrocynus vittatus</i> (tiger fish) (Manje)	87,383.32	35,619.43	17,781.49	17,781.49	155,856.17	86,705.93	401,127.84
<i>Haplochromis spp</i> (Masembe)	432,513.58	20,547.50	52,836.43	249,731.15	81,173.91	120,744.79	957,547.37
<i>Bathybatus minor</i> (Mbanga/Lembela)	65,368.15	120,744.79	82,302.90	2,593,049.34	126,502.60	249,392.46	3,237,360.23
<i>Labeo lineatus</i> (Mbilingi)	220,942.07	137,792.44	12,305.92	548,516.64	92,633.10	63,448.87	1,075,639.04
<i>Bagrus docmak</i> (Mbofu/Kibogobogo)	139,316.57	63,335.98	7,112.60	63,505.32	110,301.69	9,700,903.76	10,084,475.91
<i>Lates stappersii</i> Mgebuka/Mvolo	15,408,197.68	15,942,997.17	837,479.97	54,892,251.08	3,980,513.63	13,583,252.27	104,644,691.80

<i>Hemibates stenosoma</i> (Mpande)	113,688.64	109,172.71	102,568.15	2,970,016.94	124,978.48	588,482.66	4,008,907.57
<i>O.tanganicae</i> (Serotheron) (Ngege)	187,693.51	124,978.48	20,547.50	3,562,733.28	52,159.04	271,915.68	4,220,027.48
<i>Synodontis lacustricolus</i> Ngogo/Kolokolo	239,288.06	74,738.71	312,615.54	294,326.00	124,809.13	80,214.28	1,125,991.71
<i>Malapterurus electricus</i> (Nyika)	48,772.09	92,125.05	52,723.53	1,615,236.72	29,410.02	232,909.30	2,071,176.71
<i>Lates anguistifrons</i> (Sangara)	99,632.80	63,448.87	227,207.93	1,192,263.04	18,741.13	373,749.99	1,975,043.76
<i>Lates mariae</i> (Sangara/Ng'omba)	190,120.82	74,512.91	12,080.12	1,872,249.81	93,818.53	410,724.20	2,653,506.41
<i>Lates microlepis</i> Sangara/Nonzi	181,484.10	127,800.93	6,999.70	1,627,542.64	120,857.69	168,331.44	2,233,016.50
Others	1,708,603.65	499,631.65	8,523.83	3,063,553.22	218,797.01	210,273.18	5,709,382.54
Total	34,980,086.56	34,701,735.67	14,416,724.35	163,693,577.93	22,107,190.72	59,861,076.88	329,760,392.11

Source: Ministry of Livestock and Fisheries, 2019

Table 21: The estimated fish weight (MT) for Lake Tanganyika by Months and by Districts 2019

Month/District	Kigoma DC	Kigoma MC	Uvinza DC	Nkasi MC	Tanganyika	Karambo	Total
Jan	116.18	85.26	45.38	509.28	39.23	114.69	910.01
Feb	605.34	1,430.84	79.16	2,573.59	81.30	3,658.62	8,428.85
Mar	51.28	98.11	100.18	3,685.60	1,472.17	495.17	5,902.52
Apr	2,040.40	1,480.61	347.97	7,826.08	560.24	1,625.75	13,881.04
May	40.05	56.37	8.77	852.35	34.72	141.87	1,134.12
Jun	28.83	152.70	85.54	4,223.86	29.91	196.21	4,717.05
Jul	278.40	85.26	61.91	1,993.93	213.01	174.48	2,806.99
Aug	2,772.90	104.53	925.37	4,827.20	112.78	2,783.51	11,526.29
Sep	89.97	51.55	1,345.27	6,572.10	1,861.17	207.10	10,127.15
Oct	89.97	51.55	21.75	444.21	84.19	136.43	828.10
Nov	78.74	66.00	31.20	870.09	11.59	1,973.62	3,031.24
Dec	1,250.49	3,720.58	14.90	450.13	203.36	1,228.96	6,868.42
Total	7,442.57	7,383.35		34,828.42	4,703.66	12,736.40	70,161.79

			3,067.39				
--	--	--	----------	--	--	--	--

Source: Ministry of Livestock and Fisheries, 2019

Table 22: The Value of fish (000's Tshs) in Lake Tanganyika by Month and District during 2019

Month/District	Kigoma DC	Kigoma MC	Uvinza DC	Nkasi MC	Tanganyika	Karambo	Total
Jan	546,032.34	400,735.54	213,271.07	2,393,603.66	184,337.30	539,035.82	4,277,015.72
Feb	2,845,115.86	6,724,961.22	372,030.89	12,095,899.55	382,111.15	17,195,497.97	39,615,616.64
Mar	241,051.87	461,110.01	470,839.45	17,322,351.21	6,919,216.14	2,327,306.29	27,741,874.98
Apr	9,589,876.18	6,958,912.28	1,635,448.24	36,782,543.55	2,633,109.66	7,641,024.28	65,240,914.20
May	188,266.79	264,892.98	41,188.74	4,006,019.60	163,201.17	666,769.42	5,330,338.69
Jun	135,481.71	717,701.51	402,006.52	19,852,176.22	140,555.31	922,236.63	22,170,157.89
Jul	1,308,483.50	400,735.54	290,985.67	9,371,472.63	1,001,098.00	820,049.75	13,192,825.08
Aug	13,032,636.46	491,297.25	4,349,242.06	22,687,804.24	530,064.10	13,082,475.87	54,173,519.98
Sep	422,867.15	242,252.56	6,322,748.80	30,888,885.30	8,747,491.92	973,330.07	47,597,575.81
Oct	422,867.15	242,252.56	102,250.21	2,087,800.64	395,698.66	641,222.70	3,892,091.91
Nov	370,082.07	310,173.84	146,658.55	4,089,420.42	54,501.04	9,276,014.43	14,246,850.34
Dec	5,877,325.50	17,486,710.39	70,054.16	2,115,600.91	955,806.27	5,776,113.64	32,281,610.88
Total	34,980,086.56	34,701,735.67	14,416,724.35	163,693,577.93	22,107,190.72	59,861,076.88	329,760,392.11

Source: Ministry of Livestock and Fisheries, 2019

Table 23: Species percentage composition by District for Lake Tanganyika – 2019

Species/District	Kigoma DC	Kigoma MC	Uvinza DC	Nkasi MC	Tanganyika	Karambo	Total
<i>Stolothrissa tanganicae (Dagaa)</i>	4.17	4.81	3.76	16.81	4.98	9.64	44.18

<i>Limnothrissa miodon</i> (Dagaa/Lumbu)	0.22	0.27	0.02	8.26	0.02	0.21	9.00
<i>Clarias gariepinus</i> (Kambale/Mumi)	0.16	0.03	0.01	0.46	0.02	0.15	0.82
<i>Auchenoglanis occidentalis</i> (Kavungwe)	0.05	0.03	0.02	0.55	0.02	0.00	0.68
<i>Boulengerochromis microlepsi</i> (Kuhe/Inkumpi)	0.05	0.06	0.02	0.06	0.04	0.15	0.39
<i>Tylochromis Polylepis</i> (Kungura)	0.16	0.02	0.01	0.88	0.01	0.07	1.14
<i>Hydrocynus vittatus</i> (tiger fish) (Manje)	0.03	0.01	0.01	0.01	0.05	0.03	0.12
<i>Haplochromis spp</i> (Masembe)	0.13	0.01	0.02	0.08	0.02	0.04	0.29
<i>Bathybatus minor</i> (Mbanga/Lembela)	0.02	0.04	0.02	0.79	0.04	0.08	0.98
<i>Labeo lineatus</i> (Mbilingi)	0.07	0.04	0.00	0.17	0.03	0.02	0.33
<i>Bagrus docmak</i> (Mbofu/Kibogobogo)	0.04	0.02	0.00	0.02	0.03	2.94	3.06
<i>Lates stappersii</i> Mgebuka/Mvolo	4.67	4.83	0.25	16.65	1.21	4.12	31.73
<i>Hemibates stenosoma</i> (Mpande)	0.03	0.03	0.03	0.90	0.04	0.18	1.22
<i>O.tanganicae</i> (Serotheron) (Ngege)	0.06	0.04	0.01	1.08	0.02	0.08	1.28
<i>Synodontis lacustricolus</i> Ngogo/Kolokolo	0.07	0.02	0.09	0.09	0.04	0.02	0.34
<i>Malapterurus electricus</i> (Nyika)	0.01	0.03	0.02	0.49	0.01	0.07	0.63
<i>Lates anguistifrons</i> (Sangara)	0.03	0.02	0.07	0.36	0.01	0.11	0.60
<i>Lates mariae</i> (Sangara/Ng'omba)	0.06	0.02	0.00	0.57	0.03	0.12	0.80
<i>Lates microlepis</i> Sangara/Nonzi	0.06	0.04	0.00	0.49	0.04	0.05	0.68
Others	0.52	0.15	0.00	0.93	0.07	0.06	1.73
Total	10.61	10.52	4.37	49.64	6.70	18.15	100.00

Source: Ministry of Livestock and Fisheries, 2019

2.2.3 Territorial Marine Water.

Table 24: The status of artisanal fishing effort in Territorial Marine Water 2019

Item/Region	Pwani	DSM	Lindi	Mtwara	Tanga	Total
Total number of Landing sites	93	31	57	37	56	274
Total number of Fishermen	13,804	8,792	10,742	5,620	14,077	53,035
Total number of Fishing vessels	3,057	1,240	2,337	1,273	1,335	9,242
Number of Fishing gears by type and size						
Number of Gill nets	52,210	4,599	4,583	2,577	2,510	66,479

Number of Shark nets	1,189	788	269	575	856	3,677
Number of Traps	645	235	46	500	166	1592
Number of hand lines	641	0	268	13	37	959
Number of Long lines	25,288	78	543	673	1844	28,426
Number of Beach seines	19	1	11	54	13	98
Number of Ring nets	24	109	26	47	248	454
Number of Purse seine	99	38	0	0	2	139
Number of cast nets	39	0	19	0	32	90
Number of Scoop nets	4	120	0	0	34	158
Number of Spears	638	400	241	298	710	2287
Number of Fences	7	4	0	0	4	15
Engines						
Number of Outboard engines	312	393	305	114	456	1,580
Number of Inboard engines	47	44	4	0	10	105
Number of vessel using paddle	1,986	568	912	891	336	4,693
Number of vessel using Sail	712	235	854	258	805	2,864
Number of Trawlers	3	10	0	0	0	13

Source: Ministry of Livestock and Fisheries, 2019

Table 25: Weight of fish (MT) for Marine Territorial Water by District by species 2019

Species/District	Swahili	Muheza	Pangani	Tanga	Mkinga	Mafia	Kibiti	Mkuranga	Bagamoyo	Lindi Urban	Lindi Rural	Mtwara Urban	Mtwara Rural	Kigamboni	Kilwa	Ilala	Kinondoni	Total
<i>Naso hexacanthus</i>	Puju	10.66	6.08	22.00	9.86	13.99	2.42	14.44	13.87	3.91	5.48	6.16	14.27	156.68	9.75	10.89	128.76	429.24
<i>Netuma thalassina</i>	Hongwe	55.57	102.07	38.39	49.84	28.99	77.10	329.22	81.80	9.36	13.65	10.62	25.41	38.92	3.79	3,372.11	57.51	4,294.36
<i>Caesio xanthonota</i>	Mbono	4.71	7.00	48.58	71.38	524.99	10.44	2.65	113.99	8.08	11.73	2.31	4.65	42.03	63.24	259.12	72.41	1,247.29
<i>carenx tille</i>	Karambizi	187.30	105.63	168.74	151.56	199.78	34.26	266.34	126.82	32.91	48.98	56.47	140.05	114.64	162.44	270.58	245.49	2,311.98
<i>Clarius gariepinus</i>	Kambale	3.68	4.02	4.25	16.51	12.38	2.99	7.23	2.88	6.06	8.71	1.47	2.52	2.73	2.30	3.45	1.73	82.89
<i>Chanidae</i>	Mwatiko	2.65	10.89	41.48	81.80	10.66	4.14	1.96	175.50	1.52	1.90	0.97	1.28	1.70	1.04	251.79	2.76	592.05
<i>Chirocentrus nudus</i>	Mkongwe	25.56	6.08	30.02	38.61	75.96	3.68	1.62	38.50	29.61	44.03	10.54	25.20	1.53	179.17	265.19	1.39	776.69
<i>Sardinella neglecta</i>	Dagaa papa	254.54	7.46	448.74	93.48	40.22	58.66	347.55	545.95	183.15	274.34	86.36	214.76	140.99	231.06	4,484.48	290.05	7,701.79

<i>Gerres oblongus</i>	Chaa	8.26	3.68	10.55	8.6	30.02	2.88	5.17	7.46	101.09	151.25	18.29	44.58	2.61	2.88	264.85	1.27	663.43
<i>Pomadasys multimaculatum</i>	Karamamba	8.26	3.68	10.55	8.60	30.02	2.88	5.17	7.46	101.09	151.25	18.29	44.58	2.61	2.88	264.85	1.27	663.43
<i>Hemiramphus far</i>	Chuchung	7.23	4.71	15.13	16.85	4.14	41.59	1.62	6.20	2.49	3.34	1.47	2.52	4.56	2.65	288.10	2.76	405.34
<i>Istiompax indica</i>	Samsuri	114.79	265.42	7.23	8.72	72.52	25.90	2.88	24.64	5.69	10.66	6.08	22.00	23.85	2.42	14.44	13.87	621.12
<i>Halichoeres nigrescens</i>		48.24	4.82	56.71	31.51	11.81	4.25	1.62	4.59	3.49	55.57	102.07	38.39	78.83	77.10	329.22	81.80	930.03
<i>Lethrinus harak</i>	Changu	18.68	135.18	30.02	169.31	37.01	5.05	1.96	249.04	4.00	4.71	7.00	48.58	596.36	10.44	2.65	113.99	1,433.98
<i>Uroteuthis duvaucelii</i>	Ngisi	775.39	378.82	59.92	79.85	231.06	36.21	119.71	11.81	18.61	187.30	105.63	168.74	351.34	34.26	266.34	126.82	2,951.82
<i>Valamugil buchanani</i>	Mkizi	2.65	7.46	113.76	162.44	83.06	3.10	1.73	168.97	1.98	3.68	4.02	4.25	28.89	2.99	7.23	2.88	599.08
<i>Upeneus tragula</i>	Mkundaji	7.11	52.93	28.08	59.35	55.57	7.11	269.43	0.77	16.55	2.65	10.89	41.48	92.46	4.14	1.96	175.50	825.98
<i>Nemipterus japonicus</i>	Koana	5.85	2.42	43.88	145.03	25.90	2.99	19.37	48.24	6.75	25.56	6.08	30.02	114.57	3.68	1.62	38.50	520.45
<i>Octopus chromatus</i>	Pweza	95.43	61.41	87.64	148.35	14.44	1.50	3.10	277.45	109.43	254.54	7.46	1,540.46	133.70	58.66	347.55	545.95	3,687.08
<i>Panulirus ornatus</i>	Kamba	50.53	242.28	49.27	344.32	131.28	633.83	3.68	45.26	69.15	8.26	3.68	652.37	790.98	4.36	123.15	128.54	3,280.94
<i>Penaeus Monodon</i>	Kamba mti	2.99	380.89	5.05	117.42	8.95	11.70	11.81	46.98	1.66	8.26	3.68	10.55	38.63	2.88	5.17	7.46	664.05
<i>Rachycentron canadum</i>	Songoro	6.88	3.10	1.62	1.62	7.57	797.16	398.07	268.17	2.90	7.23	4.71	15.13	20.99	41.59	1.62	6.20	1,584.54
<i>Pastinachus sephen</i>	Taa	398.53	15.13	87.87	140.33	12.15	3.79	2.88	60.95	102.92	114.79	265.42	7.23	81.24	25.90	2.88	24.64	1,346.65
<i>Gymnosarda unicolor</i>	Jodari	507.81	1,043.78	76.07	151.90	48.81	9.98	75.96	153.74	20.08	48.24	4.82	56.71	43.32	4.25	3.67	4.59	2,253.72
<i>Scomberomorus plurilineatus</i>	Nguru-	273.78	3.68	198.64	120.40	268.40	162.10	258.32	101.27	20.63	18.68	135.18	30.02	206.33	5.05	1.96	249.04	2,053.48
<i>Thunnus obesus</i>	Jodari	69.08	7.11	77.45	122.12	138.73	2.88	3.91	113.99	19.48	775.39	378.82	59.92	310.91	36.21	119.71	11.81	2,247.53
<i>Xiphias gladius</i>	Nduwaro	0.77	0.77	0.77	0.77	0.77	0.77	0.77	130.71	0.77	2.65	7.46	113.76	245.50	3.10	1.73	168.97	680.02
<i>Euthynus affinis</i>	Sehewa	0.77	68.86	0.77	0.77	412.50	0.77	3.91	0.77	0.77	7.11	52.93	28.08	114.92	7.11	269.43	0.77	970.22
<i>Rastrelliger kanagurta</i>	Vibua	8.26	3.68	652.37	127.28	663.71	4.36	123.15	128.54	106.91	159.98	139.22	346.92	115.1	898.65	445.26	300.24	4,223.62
<i>Cephalopholis argus</i>	Chewa	71.38	41.82	81.80	149.15	75.96	257.17	113.07	6.77	148.24	95.43	61.41	87.64	162.80	1.50	3.10	277.45	1,634.69
<i>Carcharhinus falciformis</i>	Papa	172.52	253.51	44.91	134.84	59.23	3.91	312.50	118.34	79.60	50.53	242.28	49.27	264.52	633.83	3.68	45.26	2,468.72
<i>Siganus Canaliculatus</i>	Tasi	88.79	264.85	102.30	128.88	261.87	3.79	20.63	66.56	214.72	2.99	380.89	5.05	126.37	11.70	11.81	46.98	1,738.17

<i>Sphyræna obtusata</i>	Msusa, Mzia	58.66	37.24	97.15	145.37	192.22	3.22	4.48	94.51	102.88	6.88	3.10	1.62	9.19	797.16	398.07	268.17	2,219.92
Others	Wengineo	329.22	138.96	331.74	125.56	307.92	347.44	356.95	101.50	218.85	398.53	15.13	87.87	152.49	3.79	2.88	60.95	2,979.77
Total	Puju	3,669.02	3,672.50	3,063.67	3,154.56	4,190.99	2,567.88	3,088.42	3,464.94	1,655.00	2,818.87	2,145.05	3,965.18	4,780.59	3,332.06	11,855.04	3,552.73	60,976.51

Source: Ministry of Livestock and Fisheries, 2019

Table 26: The Value of fish (000's Tshs) for Marine Territorial waters by District by Species, 2019

Species Name (English)/ District	Species Name (Swahili)	Muheza	Pangani	Tanga	Mkinga	Mafia	Kibiti	Mkuranga	Bagamoyo	Lindi Urban	Lindi Rural	Mtwara Urban	Mtwara Rural	Kigamboni	Kilwa	Ilala	Kinondoni	Total	
<i>Naso hexacanthus</i>	Puju	50.15	28.61	103.45	46.38	65.76	11.39	67.92	65.22	18.34	25.72	28.99	67.06	736.41	45.84	51.23	605.22	2,017.68	
<i>Netuma thalassina</i>	Hongwe	261.19	479.78	180.44	234.28	136.29	362.41	1,547.38	384.48	43.98	64.16	49.92	119.39	182.96	17.85	15.83	48.93	270.35	20,183.77
<i>Caesio xanthonota</i>	Mbono	22.15	32.92	228.35	335.49	2,467.47	49.07	12.46	535.77	37.94	55.11	10.89	21.83	197.5	297.27	1,217.89	340.34	5,862.47	
<i>carenx tille</i>	Karambizi	880.33	496.47	793.11	712.36	939.01	161.06	1,251.81	596.07	154.66	230.19	265.44	658.2	538.83	763.5	1,271.73	1,153.83	10,866.58	
<i>Clarius gariepinus</i>	Kambale	17.31	18.92	20	77.61	58.23	14.08	34	13.54	28.47	40.89	6.9	11.82	12.83	10.85	16.23	8.16	389.82	
<i>Chanidae</i>	Mwatiko	12.46	51.23	194.97	384.48	50.15	19.46	9.23	824.88	7.15	8.91	4.57	6.01	7.98	4.93	1,183.44	13	2,782.86	
<i>Chirocentrus nudus</i>	Mkongee	120.14	28.61	141.14	181.51	357.03	17.31	7.62	180.98	139.15	206.93	49.53	118.42	7.22	842.1	1,246.43	6.54	3,650.66	
<i>Sardinella neglecta</i>	Dagaa papa	1,196.36	35.07	2,109.09	439.4	189.05	275.73	1,633.52	2,565.99	860.8	1,289.39	405.89	1,009.33	662.65	1,085.99	77.08	1,363.26	36,198.62	
<i>Gerres oblongus</i>	Chaa	3.61	3.61	3.61	3.61	603.60	3.61	3.61	603.6	3.61	27.54	11.39	206.28	803.42	14.08	91.07	226.74	2,612.97	
<i>Pomadasys multimaculatum</i>	Karamamba	38.84	17.31	49.61	40.46	141.14	13.54	24.31	35.07	475.1	710.86	85.97	209.52	12.29	13.54	1,244.81	6	3,118.37	
<i>Hemiramphus far</i>	Chuchunge	34	22.15	71.15	79.22	19.46	195.51	7.62	29.15	11.67	15.7	6.9	11.82	21.44	12.46	1,354.10	13	1,905.37	
<i>Istiompax indica</i>	Samsuri	539.54	1,247.50	34	41	340.87	121.75	13.54	115.83	26.75	50.15	28.61	103.45	112.14	11.39	67.92	65.22	2,919.66	

<i>Halichoeres nigrescens</i>		226.74	22.69	266.58	148.13	55.53	20	7.62	21.62	16.4	261.19	479.78	180.44	370.57	362.41	1,547.38	384.48	4,371.56
<i>Lethrinus harak</i>	Changu doa	87.84	635.37	141.14	795.8	173.98	23.77	9.23	1,170.52	18.77	22.15	32.92	228.35	2,802.96	49.07	12.46	535.77	6,740.10
<i>Uroteuthis duvaucelii</i>	Ngisi	3,644.37	1,780.50	281.65	375.33	1,085.99	170.21	562.69	55.53	87.47	880.33	496.47	793.11	1,651.37	161.06	1,251.81	596.07	13,873.95
<i>Valamugil b Buchananii</i>	Mkizi	12.46	35.07	534.69	763.5	390.4	14.62	8.16	794.19	9.3	17.31	18.92	20	135.83	14.08	34	13.54	2,816.08
<i>Upeneus tragula</i>	Mkundaji	33.46	248.81	131.98	278.96	261.19	33.46	1,266.35	3.61	77.78	12.46	51.23	194.97	434.63	19.46	9.23	824.88	3,882.47
<i>Nemipterus japonicus</i>	Koana	27.54	11.39	206.28	681.67	121.75	14.08	91.07	226.74	31.7	120.14	28.61	141.14	538.54	17.31	7.62	180.98	2,446.53
<i>Octopus chromatus</i>	Pweza	448.55	288.65	411.94	697.28	67.92	7.08	14.62	1,304.03	514.3	1,196.36	35.07	7,240.20	628.45	275.73	1,633.52	2,565.99	17,329.70
<i>Panulirus ornatus</i>	Kamba koche	237.51	1,138.75	231.58	1,618.31	617.06	2,979.01	17.31	212.74	325.01	38.84	17.31	3,066.15	3,717.67	20.54	578.84	604.14	15,420.77
<i>Penaeus Monodon</i>	Kamba mti	14.08	1,790.19	23.77	551.92	42.07	54.99	55.53	220.82	7.79	38.84	17.31	49.61	181.59	13.54	24.31	35.07	3,121.44
<i>Rachycentron canadum</i>	Songoro	32.38	14.62	7.62	7.62	35.61	3,746.66	1,870.95	1,260.43	13.61	34	22.15	71.15	98.68	195.51	7.62	29.15	7,447.75
<i>Pastinachus sephens</i>	Taa usinga	1,873.10	71.15	413.02	659.59	57.15	17.85	13.54	286.5	483.72	539.54	1,247.50	34	381.87	121.75	13.54	115.83	6,329.64
<i>Gymnosarda unicolor</i>	Jodari	2,386.71	4,905.79	357.56	713.97	229.43	46.92	357.03	722.58	94.37	226.74	22.69	266.58	203.67	20	7.62	21.62	10,583.27
<i>Scomberomorus plurilineatus</i>	Ngurukanadi	1,286.81	17.31	933.63	565.92	1,261.50	761.89	1,214.12	476.01	96.94	87.84	635.37	141.14	969.78	23.77	9.23	1,170.52	9,651.76
<i>Thunnus obesus</i>	Jodari macho makubwa	324.72	33.46	364.02	573.99	652.06	13.54	18.39	535.77	91.56	3,644.37	1,780.50	281.65	1,461.32	170.21	562.69	55.53	10,563.78
<i>Xiphias gladius</i>	Nduworo	3.61	3.61	3.61	3.61	3.61	3.61	3.61	614.37	3.61	12.46	35.07	532.94	1,153.91	14.62	8.16	794.19	3,194.59
<i>Euthynus affinis</i>	Sehewa	3.61	323.65	3.61	3.61	1,938.78	3.61	18.39	3.61	3.61	33.46	248.81	131.98	540.15	33.46	1,266.35	3.61	4,560.29
<i>Rastrelliger kanagurta</i>	Vibua	38.84	17.31	3066.15	598.22	3119.45	20.54	578.84	604.14	502.46	751.87	654.37	1630.51	540.98	4223.66	2092.76	1411.17	19,851.27
<i>Cephalopholis argus</i>	Chewa	335.49	196.59	384.48	701.05	357.03	1,208.74	531.46	31.84	696.7	448.55	288.65	411.94	765.2	7.08	14.62	1,304.03	7,683.45

<i>Carcharhinus falciformis</i>	Papa	810.88	1,191.51	211.12	633.75	278.42	18.39	1,468.78	556.23	374.1	237.51	1,138.75	231.58	1,243.28	2,979.01	17.31	212.74	11,603.36
<i>Siganus Canaliculatus</i>	Tasi	417.32	1,244.81	480.85	605.75	1,230.81	17.84	96.98	312.87	1,009.18	14.07	1,790.19	23.77	593.99	54.99	55.53	220.81	8,169.77
<i>Sphyaena obtusata</i>	Msusa, Mzia	275.73	175.05	456.62	683.28	903.48	15.15	21.07	444.24	483.5	32.38	14.61	7.61	43.22	3,746.66	1,870.94	1,260.42	10,433.98
<i>Others</i>	Wengi neo	1,547.38	653.13	1,559.22	590.14	1,447.24	1,632.98	1,677.67	477.08	1,028.56	1,873.10	71.14	413.01	716.74	17.84	13.54	286.49	14,005.26
Total		17,245.20	17,261.59	14,400.05	14,827.20	19,698.53	12,069.84	14,516.39	16,286.05	7,778.04	13,249.06	10,082.44	18,634.98	22,470.08	15,661.55	55,709.92	16,698.69	286,589.60

Source: Ministry of Livestock and Fisheries, 2019

Table 27: Marine species percentage composition 2019

Species Name (English)/District	Species Name (Swahili)	Muheza	Pangani	Tanga	Mkinga	Mafia	Kibiti	Mkuranga	Bagamoyo	Lindi Urban	Lindi Rural	Mtwara Urban	Mtwara Rural	Kigamboni	Kiwa	Ilala	Kinondoni	Total
<i>Naso hexacanthus</i>	Puju	0.02	0.01	0.04	0.02	0.02	0	0.02	0.02	0.01	0.01	0.01	0.02	0.26	0.02	0.02	0.21	0.7
<i>Netuma thalassina</i>	Hongwe	0.09	0.17	0.06	0.08	0.05	0.13	0.54	0.13	0.02	0.02	0.02	0.04	0.06	0.01	5.53	0.09	7.04
<i>Caesio xanthonota carenx tille</i>	Mbono	0.01	0.01	0.08	0.12	0.86	0.02	0	0.19	0.01	0.02	0	0.01	0.07	0.1	0.42	0.12	2.05
<i>Clarius gariepinus</i>	Karambizi	0.31	0.17	0.28	0.25	0.33	0.06	0.44	0.21	0.05	0.08	0.09	0.23	0.19	0.27	0.44	0.4	3.79
<i>Chanidae</i>	Kambale	0.01	0.01	0.01	0.03	0.02	0	0.01	0	0.01	0.01	0	0	0	0	0.01	0	0.14
<i>Chirocentrus nudus</i>	Mwatiko	0	0.02	0.07	0.13	0.02	0.01	0	0.29	0	0	0	0	0	0	0.41	0	0.97
<i>Sardinella neglecta</i>	Mkongwe	0.04	0.01	0.05	0.06	0.12	0.01	0	0.06	0.05	0.07	0.02	0.04	0	0.29	0.43	0	1.27
<i>Gerres oblongus</i>	Dagaa papa	0.42	0.01	0.74	0.15	0.07	0.1	0.57	0.9	0.3	0.45	0.14	0.35	0.23	0.38	7.35	0.48	12.63
<i>Pomadasys multimaculatum</i>	Chaa	0.01	0.01	1.07	0.21	1.09	0.01	0.2	0.21	0.18	0.26	0.23	0.57	0.19	1.47	0.73	0.49	6.93
<i>Hemiramphus far</i>	Karamamba	0.01	0.01	0.02	0.01	0.05	0	0.01	0.01	0.17	0.25	0.03	0.07	0	0	0.43	0	1.09
<i>Istiompax indica</i>	Chuchunge	0.01	0.01	0.02	0.03	0.01	0.07	0	0.01	0	0.01	0	0	0.01	0	0.47	0	0.66
<i>Halichoeres nigrescens</i>	Samsuri	0.19	0.44	0.01	0.01	0.12	0.04	0	0.04	0.01	0.02	0.01	0.04	0.04	0	0.02	0.02	1.02
<i>Lethrinus harak</i>		0.08	0.01	0.09	0.05	0.02	0.01	0	0.01	0.01	0.09	0.17	0.06	0.13	0.13	0.54	0.13	1.53
<i>Uroteuthis duvaucelii</i>	Changu doa	0.03	0.22	0.05	0.28	0.06	0.01	0	0.41	0.01	0.01	0.01	0.08	0.98	0.02	0	0.19	2.35
<i>Valamugil buchani</i>	Ngisi	1.27	0.62	0.1	0.13	0.38	0.06	0.2	0.02	0.03	0.31	0.17	0.28	0.58	0.06	0.44	0.21	4.84
<i>Upeneus tragula</i>	Mkizi	0	0.01	0.19	0.27	0.14	0.01	0	0.28	0	0.01	0.01	0.01	0.05	0	0.01	0	0.98
<i>Nemipterus japonicus</i>	Mkundaji	0.01	0.09	0.05	0.1	0.09	0.01	0.44	0	0.03	0	0.02	0.07	0.15	0.01	0	0.29	1.35
<i>Octopus chromatus</i>	Koana	0.01	0	0.07	0.24	0.04	0	0.03	0.08	0.01	0.04	0.01	0.05	0.19	0.01	0	0.06	0.85
<i>Panulirus ornatus</i>	Pweza	0.16	0.1	0.14	0.24	0.02	0	0.01	0.46	0.18	0.42	0.01	2.53	0.22	0.1	0.57	0.9	6.05
<i>Penaeus Monodon</i>	Kamba koche	0.08	0.4	0.08	0.56	0.22	1.04	0.01	0.07	0.11	0.01	0.01	1.07	1.3	0.01	0.2	0.21	5.38
	Kamba mti	0	0.62	0.01	0.19	0.01	0.02	0.02	0.08	0	0.01	0.01	0.02	0.06	0	0.01	0.01	1.09

<i>Rachycentron canadum</i>	Songoro	0.01	0.01	0	0	0.01	1.31	0.65	0.44	0	0.01	0.01	0.02	0.03	0.07	0	0.01	2.6
<i>Pastinachus sephen</i>	Taa usinga	0.65	0.02	0.14	0.23	0.02	0.01	0	0.1	0.17	0.19	0.44	0.01	0.13	0.04	0	0.04	2.21
<i>Gymnosarda unicolor</i>	Jodari	0.83	1.71	0.12	0.25	0.08	0.02	0.12	0.25	0.03	0.08	0.01	0.09	0.07	0.01	0.01	0.01	3.7
<i>Scomberomorus plurilineatus</i>	Nguru- kanadi	0.45	0.01	0.33	0.2	0.44	0.27	0.42	0.17	0.03	0.03	0.22	0.05	0.34	0.01	0	0.41	3.37
<i>Thunnus obesus</i>	Jodari macho makubwa	0.11	0.01	0.13	0.2	0.23	0	0.01	0.19	0.03	1.27	0.62	0.1	0.51	0.06	0.2	0.02	3.69
<i>Xiphias gladius</i>	Nduwaro	0	0	0	0	0	0	0	0.21	0	0	0.01	0.19	0.4	0.01	0	0.28	1.12
<i>Euthynus affinis</i>	Sehewa	0	0.11	0	0	0.68	0	0.01	0	0	0.01	0.09	0.05	0.19	0.01	0.44	0	1.59
<i>Rastrelliger kanagurta</i>	Vibua	0	0	0	0	0.21	0	0	0.21	0	0.01	0	0.07	0.28	0	0.03	0.08	0.91
<i>Cephalopholis argus</i>	Chewa	0.12	0.07	0.13	0.24	0.12	0.42	0.19	0.01	0.24	0.16	0.1	0.14	0.27	0	0.01	0.46	2.68
<i>Carcharhinus falciformis</i>	Papa	0.28	0.42	0.07	0.22	0.1	0.01	0.51	0.19	0.13	0.08	0.4	0.08	0.43	1.04	0.01	0.07	4.05
<i>Siganus Canaliculatus</i>	Tasi	0.15	0.43	0.17	0.21	0.43	0.01	0.03	0.11	0.35	0	0.62	0.01	0.21	0.02	0.02	0.08	2.85
<i>Sphyaena obtusata</i>	Msusa, Mzia	0.1	0.06	0.16	0.24	0.32	0.01	0.01	0.16	0.17	0.01	0.01	0	0.02	1.31	0.65	0.44	3.64
Others	Wengineo	0.54	0.23	0.54	0.21	0.5	0.57	0.59	0.17	0.36	0.65	0.02	0.14	0.25	0.01	0	0.1	4.89
Total		6.02	6.02	5.02	5.17	6.87	4.21	5.06	5.68	2.71	4.62	3.52	6.5	7.84	5.46	19.44	5.83	100

Source: Ministry of Livestock and Fisheries, 2019

Table 28: Weight of fish (MT) for Tanga Region by District and by month for 2019

District/Month	Jan	Feb	March	Apr	May	June	July	Aug	Sept	Oct	Nov	Dec	Total
Muheza	274.41	284.03	275.33	376.24	375.78	318.97	267.88	287.01	349.10	224.24	315.19	320.80	3,669.00
Pangani	228.49	206.36	199.97	418.12	416.99	317.13	264.69	368.75	344.07	301.98	292.04	313.90	3,672.48
Tanga	388.03	307.05	263.18	188.84	197.31	249.43	301.32	246.80	265.58	242.56	189.30	224.35	3,063.73
Mkinga	402.63	347.10	262.47	170.53	169.88	248.72	296.11	236.25	276.84	261.45	221.24	261.32	3,154.54
Total	1,293.57	1,144.55	1,000.94	1,153.73	1,159.96	1,134.25	1,130.00	1,138.81	1,235.58	1,030.23	1,017.77	1,120.37	13,559.75

Source: Ministry of Livestock and Fisheries, 2019

Table 29: Value of fish caught (000's Tshs) for Tanga Region by District and by month, 2019

District/Month	Jan	Feb	March	Apr	May	June	July	Aug	Sept	Oct	Nov	Dec	Total
Muheza	1,289,807.78	1,335,031.96	1,294,114.84	1,768,430.39	1,766,276.85	1,499,238.82	1,259,119.94	1,349,029.92	1,640,833.58	1,053,995.96	1,481,472.17	1,507,852.95	17,245,205.15
Pangani	1,073,958.75	969,943.13	939,901.35	1,965,252.04	1,959,922.04	1,490,559.62	1,244,087.82	1,733,208.90	1,617,187.34	1,419,546.89	1,372,653.66	1,475,377.22	17,261,598.75
Tanga	1,823,809.46	1,443,172.58	1,236,971.84	887,561.18	927,401.53	1,172,365.86	1,416,253.42	1,159,983.05	1,248,277.89	1,140,062.87	889,714.71	1,054,459.95	14,400,034.36

Mkinga	1,892,480.9 6	1,631,472.82	1,233,661.52	801,555.21	798,486.42	1,169,055.54	1,391,784.64	1,110,425.6 2	1,301,228.60	1,228,869.91	1,039,897.42	1,228,277.6 8	14,827,196.3 4
Total	6,080,056.9 5	5,379,620.49	4,704,649.54	5,422,798.81	5,452,086.86	5,331,219.84	5,311,245.83	5,352,647.4 9	5,807,527.40	4,842,475.63	4,783,737.97	5,265,967.8 0	63,734,034.6 1

Source: Ministry of Livestock and Fisheries, 2019

Table 30: Weight of fish caught in metric tons for Coast Region by District and by month for 2019

District/District	JAN	FEB	MARCH	APR	MAY	JUNE	JULY	AUG	SEPT	OCT	NOV	DEC	Total
Mafia	300.98	213.66	284.14	341.61	295.60	314.02	377.16	378.95	506.55	388.17	388.36	401.77	4,190.96
Rufiji/Kibiti	83.24	114.66	106.39	98.27	189.64	246.71	220.90	298.12	235.72	356.11	287.64	330.51	2,567.91
Mkuranga	303.05	164.60	314.49	263.22	290.92	203.43	325.07	208.93	176.87	258.11	296.80	282.94	3,088.43
Bagamoyo	159.69	233.34	188.28	374.63	184.00	242.55	391.81	347.64	312.68	374.74	367.75	287.81	3,464.93
Total	846.96	726.26	893.30	1,077.73	960.16	1,006.71	1,314.95	1,233.63	1,231.81	1,377.12	1,340.56	1,303.04	13,312.23

Source: Ministry of Livestock and Fisheries, 2019

Table 31: The Value of fish (000's Tshs) for Pwani Region by District and by month, 2019

District/Month	Jan	Feb	March	Apr	May	June	July	Aug	Sept	Oct	Nov	Dec	Total
Mafia	1414663.6	1004254	1335521.2	1605628.1	1389413.4	1475985.4	1772742.3	1781141.1	2380900	1824480.9	1825396.2	1888440.8	19698567.13
Rufiji/kibiti	391253	538931.53	500060.26	461888.89	891357.21	1159579.7	1038282	1401260	1107948.8	1673789.6	1351997.9	1553460.9	12069809.86
Mkuranga	1424397.1	773653.28	1478181.6	1237201.3	1367382.3	956165.2	1527928.2	982007.6	831314.13	1213189.4	1395055.2	1329910.9	14516386.22
Bagamoyo	750592.53	1096773	884972.99	1760868.7	864837.46	1140059	1841626.2	1633971.8	1469657.2	1761353.3	1728565.7	1352774.2	16286051.97
Total	3980906.2	3413611.8	4198736.1	5065587	4512990.4	4731789.4	6180578.7	5798380.4	5789820.1	6472813.1	6301015	6124586.8	62570815.19

Source: Ministry of Livestock and Fisheries, 2019

Table 32: Weight of fish (MT) for Dar es Salaam Region by District and by month, 2019

District/Month	Jan	Feb	March	Apr	May	June	July	Aug	Sept	Oct	Nov	Dec	Total
Ilala	699.96756	919.95211	1073.2583	1,748.22	1,192.69	1,518.62	855.5734	1057.1263	841.1201	845.48943	809.02848	589.11292	12,150.16
Kinondoni	309.26847	101.38008	327.28623	443.80951	179.08527	230.05702	334.56463	375.67088	494.40182	337.88762	239.76154	193.13613	3,566.31
Kigamboni	315.97195	375.17645	354.4451	353.22629	396.02278	478.7297	338.38205	388.91686	329.24094	321.68658	326.32038	493.76942	4,471.89
Total	1,325.21	1,396.51	1,754.99	2,545.25	1,767.80	2,227.41	1,528.52	1,821.71	1,664.76	1,505.06	1,375.11	1,276.02	20,188.35

Source: Ministry of Livestock and Fisheries, 2019

Table 33: Value of fish in (000's Tshs) for Dar es Salaam Region by District and by month for 2019

District/Month	Jan	Feb	March	Apr	May	June	July	Aug	Sept	Oct	Nov	Dec	Total
Ilala	3,289,597.68	4,323,453.51	5,043,942.74	8,216,029.88	5,605,235.89	7,136,998.24	4,020,894.51	4,968,127.36	3,952,990.90	3,973,503.15	3,802,148.52	2,768,616.91	57,101,539.29
Kinondoni	1,453,473.51	476,465.70	1,538,151.13	2,085,772.65	841,654.79	1,081,205.44	1,572,357.21	1,765,543.21	2,323,540.04	1,587,974.20	1,126,813.54	907,689.28	16,760,640.70
Kigamboni	1,484,965.41	1,763,252.82	1,665,822.23	1,660,094.20	1,861,198.78	2,249,919.44	1,590,306.07	1,827,797.86	1,547,345.82	1,511,572.64	1,533,620.16	2,320,601.20	21,016,496.63
Total	6,228,036.61	6,563,172.04	8,247,916.09	11,961,896.73	8,308,089.46	10,468,123.11	7,183,557.79	8,561,468.43	7,823,876.76	7,073,049.99	6,462,582.22	5,996,907.39	94,878,676.62

Source: Ministry of Livestock and Fisheries, 2019

Table 34: Weight of fish (MT) for Lindi Region by District and by month, 2019

District/Month	Jan	Feb	March	Apr	May	June	July	Aug	Sept	Oct	Nov	Dec	Total
Kilwa	322.66	293.93	315.70	229.62	300.32	351.19	227.73	264.82	194.99	253.99	284.99	292.19	3,332.13
Lindi Rural	243.42	261.11	163.17	184.11	234.67	197.43	176.85	272.10	217.44	303.55	319.94	245.11	2,818.91
Lindi urban	124.19	156.02	161.18	124.84	141.04	138.17	117.58	98.28	158.18	129.78	146.13	159.50	1,654.90
Total	690.27	711.06	640.05	538.58	676.03	686.79	522.16	635.20	570.62	687.32	751.06	696.79	7,805.93

Source: Ministry of Livestock and Fisheries, 2019

Table 35: Value of fish (000's Tshs) for Lindi Region by District by month for 2019

District/Month	Jan	Feb	March	Apr	May	June	July	Aug	Sept	Oct	Nov	Dec	Total
Kilwa	1,516,531.25	1,381,505.02	1,483,851.45	1,079,257.32	1,411,546.74	1,650,642.22	1,070,374.01	1,244,702.13	916,504.41	1,193,771.19	1,339,511.22	1,373,321.61	15,661,518.56
Lindi Rural	1,144,090.81	1,227,217.00	766,900.32	865,316.57	1,102,958.42	927,930.40	831,183.14	1,278,847.85	1,021,985.75	1,426,902.90	1,503,730.04	1,152,005.03	13,249,068.23
Lindi urban	583,724.44	733,319.94	757,547.13	586,772.34	662,899.56	649,386.17	552,638.91	461,921.53	743,441.52	609,976.61	686,803.73	749,632.92	7,778,064.81
Total	3,244,346.50	3,342,041.96	3,008,298.91	2,531,346.22	3,177,404.72	3,227,958.80	2,454,196.07	2,985,471.51	2,681,931.69	3,230,650.69	3,530,044.99	3,274,959.56	36,688,651.60

Source: Ministry of Livestock and Fisheries, 2019

Table 36: Weight of fish (MT) for Mtwara Region by District by month, 2019

District/Month	Jan	Feb	March	Apr	May	June	July	Aug	Sept	Oct	Nov	Dec	Total
Mtwara Urban	92.15	67.68	207.34	159.23	193.57	195.86	130.48	132.77	182.79	253.04	234.82	295.40	2,145.13
Mtwara Rural	250.38	362.51	353.78	376.23	359.05	364.78	303.42	261.67	234.81	370.61	353.42	374.44	3,965.10
Total	342.54	430.20	561.12	535.46	552.62	560.64	433.90	394.44	417.60	623.65	588.23	669.84	6,110.24

Source: Ministry of Livestock and Fisheries, 2019

Source:
Ministry

Table 37: Value of fish (000's Tshs) for Lindi Region by District and by month for 2019

District/Month	Jan	Feb	March	Apr	May	June	July	Aug	Sept	Oct	Nov	Dec	Total
Mtwara Urban	433,084.58	318,106.10	974,461.61	748,354.89	909,752.02	920,519.00	613,229.20	623,996.19	859,077.19	1,189,262.99	1,103,599.77	1,388,344.57	10,081,788.11
Mtwara Rural	1,176,782.11	1,703,772.27	1,662,743.05	1,768,259.52	1,687,507.12	1,714,424.59	1,426,037.85	1,229,809.51	1,103,566.60	1,741,833.53	1,661,081.17	1,759,814.43	18,635,631.75
Total	1,609,866.69	2,021,878.37	2,637,204.66	2,516,614.41	2,597,259.14	2,634,943.59	2,039,267.05	1,853,805.70	1,962,643.79	2,931,096.52	2,764,680.93	3,148,159.01	28,717,419.85

Source: Ministry of Livestock and Fisheries, 2019

2.2.4 Lake Nyasa

Table 38: The status of artisanal fishing effort in Lake Nyasa for 2019

Item/Region	Mbeya (Kyela)	Ruvuma (Mbinga)	Iringa (Ludewa)	Total
Number of Landing sites	20	70	24	114
Number of fishing vessels	669	1,357	606	2,632
Number of fishers	2,073	2,375	1,102	5,550
Fishing gears				
Gillnets by size				
GN < 2.5-3"	355	14,329	549	15,233
GN 3.5-5"	141	3,098	707	3,946
Total number of GN <5"	496	17,427	1,256	19,179
GN 6"	46	463	165	674
GN 7"	4	210	43	257
GN 8"	3	37	23	63
GN 9"	1	0	120	121
GN 10"	0	0	0	0
GN > 10"	3	0	0	3
Total number of GN ≥ 5"	57	710	351	1,118
Total number of Gillnets	553	18,137	1,607	20,297
Ring nets				
RN < 5 mm	5	0	255	260

RN 6 to 9 mm	0	0	140	140
RN 10 mm	1	0	0	1
Total Ring nets				401
Lift Nets(mesh size)				
LN < 5 mm	1	0	237	238
Total Lift nets				
Hooks				
No. of Hand lines	102	190	0	292
No. Long line hooks				
LL <4	25	0	0	25
LL 4-7	20	3,483	500	4,003
LL 8-9	169	62,799	7,300	70,268
LL >10	8	80,440	0	80,448
Total Long line hooks				155,036
Other gears				
Traps	26	523	5	554
Light	228	225	501	954

Source: Ministry of Livestock and Fisheries, 2019

Table 39: Weight of fish (MT) for Lake Nyasa 2019

Region/Month	Jan	Feb	March	April	May	June	July	Aug	Sept	Oct	Nov	Dec.	Total
Mbeya (Kyela)	223.16	365.12	280.91	219.69	427.30	661.86	634.54	831.04	712.46	473.43	732.98	413.53	5,976.03
Iringa (Ludewa)	175.41	395.89	547.90	468.29	569.68	446.27	629.41	661.74	663.45	788.14	807.07	827.07	6,980.31
Ruvuma (Mbinga)	1,107.5 4	1,204.1 3	1,237.1 3	1,262.6 8	1,337.1 9	1,057.6 1	1,271.4 1	1,301.4 8	1,142.3 6	1,228.7 6	1,552.7 9	1,240.60	14,943.7 0
Total	1,506.1 1	1,965.1 4	2,065.9 4	1,950.6 5	2,334.1 8	2,165.7 4	2,535.3 7	2,794.2 6	2,518.2 7	2,490.3 3	3,092.8 3	2,481.21	27,900.0 3

Source: Ministry of Livestock and Fisheries, 2019

Table 40: Value of fish (000's Tshs) for Lake Nyasa by Region by month, 2019

Region	January	February	March	April	May	June	July	August	September	October	November	December	Total
Mbeya (Kyela)	1,231,825.57	1,819,239.25	2,863,284.28	1,876,698.62	1,958,414.51	2,132,360.53	2,704,740.70	2,437,734.48	3,533,797.30	2,070,935.26	1,776,536.70	2,153,389.00	26,558,956.20
Iringa (Ludewa)	1,057,695.09	2,060,882.18	3,193,283.68	2,694,410.92	1,323,225.63	2,472,874.16	3,381,709.82	2,614,539.63	1,823,297.37	3,156,852.78	3,029,667.43	1,998,350.15	28,806,788.85
Ruvuma (Mbinga)	5,857,719.81	6,909,604.40	7,711,545.35	5,850,710.32	6,752,628.73	5,195,507.50	6,571,488.76	6,029,267.84	5,842,870.76	5,519,143.01	7,093,787.96	6,430,099.97	75,764,374.40
TOTAL	8,147,240.47	10,789,725.83	13,768,113.31	10,421,819.86	10,034,268.86	9,800,742.18	12,657,939.28	11,081,541.95	11,199,965.43	10,746,931.05	11,899,992.10	10,581,839.12	131,130,119.45

Source: Ministry of Livestock and Fisheries, 2019

Table 41: Weight (MT) for Lake Nyasa by species and by month, 2019

Month/Species	Tilapia	Haplo	Rampho	Labeo	Bagrus	Clarias	Barbas	Barilius	Dagaa	Others	Total
Jan.	349.04	418.70	287.26	62.41	215.30	96.04	62.64	239.89	212.43	117.68	2,061.40
Feb.	347.41	382.59	189.02	83.60	318.38	142.23	149.14	219.95	323.38	215.20	2,370.91
March	347.33	281.93	213.35	62.43	212.66	178.31	185.13	370.47	232.48	266.35	2,350.44
April	201.07	366.36	214.77	90.04	209.36	197.43	83.14	301.05	314.64	128.05	2,105.90
May	193.84	444.45	384.10	48.98	171.59	171.52	114.58	232.81	305.05	135.33	2,202.25
June	174.74	327.21	361.56	62.59	176.76	124.60	157.98	420.21	324.07	119.40	2,249.10
July	381.87	272.24	247.39	45.71	96.95	97.25	99.54	262.74	420.53	114.22	2,038.45
Aug.	222.97	341.39	351.40	85.24	199.00	204.40	74.61	396.29	299.70	193.23	2,368.23
Sept.	348.17	370.50	325.09	90.61	382.09	316.47	107.66	373.34	256.14	211.80	2,781.88
Oct.	220.03	350.82	322.06	53.97	214.77	135.33	82.07	256.40	361.99	309.53	2,306.96
Nov.	245.85	271.76	297.66	57.99	404.47	33.18	68.15	170.30	451.55	185.89	2,186.80
Dec.	341.97	417.13	371.92	166.50	417.08	221.64	83.86	314.90	408.15	134.55	2,877.71
Total	3,374.30	4,245.09	3,565.58	910.08	3,018.42	1,918.39	1,268.50	3,558.34	3,910.12	2,131.22	27,900.03

Source: Ministry of Livestock and Fisheries, 2019

Table 42: Value of fish (000's Tshs) for Lake Nyasa by species and by month, 2019

Month/Species	Tilapia	Haplo	Rampho	Labeo	Bagrus	Clarias	Barbas	Barilius	Dagaa	Others	Total
Jan.	1,640,479.96	1,967,910.38	1,350,143.18	293,339.99	1,011,917.46	451,373.46	294,395.17	1,127,500.23	998,443.62	553,076.57	9,688,580.03
Feb.	1,632,850.20	1,798,188.76	888,380.25	392,932.73	1,496,407.33	668,497.01	700,964.08	1,033,751.56	1,519,864.79	1,011,430.45	11,143,267.17
March	1,632,444.36	1,325,062.36	1,002,745.51	293,421.16	999,498.80	838,056.29	870,117.52	1,741,209.05	1,092,679.30	1,251,849.12	11,047,083.47
April	945,035.29	1,721,891.15	1,009,401.26	423,208.28	983,995.77	927,908.91	390,741.21	1,414,914.98	1,478,793.95	601,858.34	9,897,749.14
May	911,026.03	2,088,931.39	1,805,250.35	230,191.54	806,482.06	806,157.39	538,547.55	1,094,221.48	1,433,745.89	636,029.93	10,350,583.62
June	821,254.58	1,537,884.02	1,699,326.53	294,151.67	830,751.20	585,624.81	742,521.93	1,974,971.97	1,523,111.50	561,193.33	10,570,791.53
July	1,794,779.72	1,279,527.29	1,162,727.00	214,850.85	455,675.35	457,055.20	467,850.50	1,234,885.07	1,976,514.16	536,843.03	9,580,708.18
Aug.	1,047,955.91	1,604,522.68	1,651,599.94	400,643.66	935,295.17	960,700.65	350,644.37	1,862,554.73	1,408,583.90	908,185.16	11,130,686.18
Sept.	1,636,421.58	1,741,371.39	1,527,900.39	425,886.81	1,795,834.90	1,487,397.72	505,999.31	1,754,682.89	1,203,879.02	995,440.42	13,074,814.43
Oct.	1,034,157.40	1,648,840.24	1,513,696.05	253,649.00	1,009,401.26	636,029.93	385,708.81	1,205,096.53	1,701,355.72	1,454,768.31	10,842,703.26
Nov.	1,155,503.08	1,277,254.60	1,399,006.12	272,561.07	1,901,028.21	155,923.11	320,287.66	800,394.48	2,122,291.31	873,688.90	10,277,938.55
Dec.	1,607,282.38	1,960,524.12	1,748,027.14	782,537.60	1,960,280.62	1,041,705.99	394,150.25	1,480,011.46	1,918,316.93	632,377.39	13,525,213.89
Total	15,859,190.50	19,951,908.39	16,758,203.72	4,277,374.36	14,186,568.14	9,016,430.48	5,961,928.37	16,724,194.46	18,377,580.08	10,016,740.95	131,130,119.45

Source: Ministry of Livestock and Fisheries, 2019

Table 43: General trend of fishing effort, fish catches and Value from fresh and Marine Territorial water (2000 – 2019)

Year	Fresh Water				Marine				Total			
	Fishers	F/Vessels	Weight (M.Ton.)	Values 000'	Fishers	F/Vessels	Weight (M.Ton.)	Values 000'	Fishers	F/Vessels	Weight (M.Ton.)	Values 000'
2000	81,704	25,014	271,000.00	45,500,000.00	20,625	5,157	49,900.00	32,180,000.00	102,329	30,171	320,900.00	77,680,000.00
2001	101,195	25,014	283,354.00	47,108,668.60	19,071	4,927	52,934.90	34,113,717.60	120,266	29,941	336,288.90	81,222,386.20
2002	105,499	31,225	273,856.00	54,771,300.00	19,071	4,927	49,674.50	33,372,136.00	124,570	36,152	323,530.50	88,143,436.00
2003	105,499	31,225	301,855.00	141,073,500.00	19,071	4,927	49,270.00	34,489,000.00	124,570	36,152	351,125.00	175,562,500.00
2004	103,443	32,248	312,040.00	147,743,000.00	19,071	4,927	50,470.00	40,376,000.00	122,514	37,175	362,510.00	188,119,000.00
2005	103,443	32,248	320,566.00	256,452,800.00	29,754	7,190	54,968.60	82,452,900.00	133,197	39,438	375,534.60	338,905,700.00
2006	126,790	44,362	292,518.70	263,266,839.00	29,754	7,190	48,590.50	72,885,750.00	156,544	51,552	341,109.20	336,152,589.00

2007	126,790	44,362	284,346.90	252,525,196.95	36,247	7,342	43,498.50	39,239,352.20	163,037	51,704	327,845.40	291,764,549.15
2008	133,791	44,832	281,690.90	319,639,171.00	36,247	7,342	43,130.20	51,756,216.00	170,038	52,174	324,821.00	371,395,387.00
2009	135,769	45,234	288,058.50	342,492,879.00	36,321	7,664	47,615.80	67,930,599.80	172,090	52,898	335,674.30	410,423,478.80
2010	141,206	47,635	294,474.00	684,844,020.00	36,321	7,664	52,683.40	89,639,934.00	177,527	55,299	347,157.40	774,483,954.00
2011	141,206	47,635	290,473.60	1,031,883,680.91	36,321	7,664	50,592.40	166,954,953.00	177,527	55,299	341,066.00	1,198,838,633.91
2012	146,420	49,321	314,944.00	1,129,349,924.72	36,321	7,664	50,079.40	177,781,799.00	182,741	56,985	365,023.40	1,307,131,723.72
2013	147,020	49,721	315,008.00	1,248,903,393.00	36,321	7,664	52,846.00	195,529,127.00	183,431	57,385	367,854.00	1,444,432,520.00
2014	147,479	49,627	314,061.54	1,287,248,813.00	36321	7,664	51,912.40	207,649,600.00	183,800	57,291	365,973.94	1,503,574,790.00
2015	147,479	49,627	309,922.00	1,270,856,679.85	36,321	7,664	52,723.00	210,892,897.14	183,800	57,291	362,645.00	1,481,749,577.00
2016	149,018	49,688	308,771.59	1,274,485,403.56	54,511	9,650	53,823.30	211,891,899.18	203,529	59,338	362,594.89	1,486,377,302.74
2017	149,018	49,688	332,373.00	1,495,678,680.00	54,511	9,650	55,170.00	248,262,840.00	203,529	59,338	387,543.00	1,743,941,520.00
2018	149,018	49,688	323,120.00	1,518,667,619.00	53,035	9,242	53,231.00	250,190,118.00	202,053	58,930	376,352.00	1,768,857,737.00
2019	149,018	49,688	409,332.72	1,923,863,802.48	53,035	9,242	60,976.51	286,589,597.96	202,053	58,930	470,309.23	2,210,453,400.44

Source: Ministry of Livestock and Fisheries, 2019

2.3 Export of fish and fishery Products

Apart from using fish as food, also fish is among the important traded commodity outside the country, whereby through fish export, the country is earning an revenue. Ministry of Livestock and Fisheries is responsible for coordinating trade of fish and fishery products to by setting an international standard and issuing fish export licences, fish export permits and controlling fish processing plants to ensure safety and quality of fish and fishery products as per the requirements of the external markets.

The general export performance in 2019 in terms of fish and fishery products export by destinations; fish and fishery products export by water body (Lake Victoria, Marine Territorial waters, Lake Tanganyika, Lake Nyasa, Lake Rukwa), trend of export of fish and fishery products from 2012-2019.and the list of potential of fish and fishery products exporters in 2019 is as shown in the table 44 to 54.

Table 44: Export of fish and fishery products for 2019

Product	Weight (MT)	Aquarium Fish	Fob (USD)	Fob (Tshs)	Royalty
Aquarium Fish/L. Nyasa		50,399.00	127,108.80	293,183,085.88	65,454,140.89
Aquarium Fish/L. Tang		86,516.00	667,613.72	1,576,903,595.64	160,674,071.99
Dried chips	15.6		3,320.00	7,696,247.54	9,852,235.92
Dried Dagaa/ L. Vict	9,511.65		3,733,751.12	8,931,916,767.76	3,682,819,769.33
Dried Dagaa/ L.Tang	91.88		754,663.54	1,740,670,869.82	251,667,677.80
Dried Dagaa/ Marine	223.51		632,958.62	1,459,952,115.40	157,508,366.70
Dried Dagaa/L. Nyasa	2.07		6,141.00	14,124,300.00	1,240,000.00
Dried fins	0.02		24.00	55,200.00	30,000.00
Dried Fish (Mgebuka)/L.Tang.	32.34		116,249.47	269,483,342.50	63,154,820.70
Dried Fish Chests	301.58		19,955.00	45,902,666.49	36,137,060.00
Dried fish frame	440.6		63,489.00	147,176,825.25	26,493,663.66
Dried Fish Heads	2,992.79		261,347.40	601,104,180.62	204,738,832.39
Dried Fish Meal/L. Manyara	45		10,535.52	24,422,882.48	2,057,400.00
Dried Fish Meal/L.Vict	1,900.27		69,262.70	160,317,771.87	105,234,803.84
Dried Fish/L. Manyara	5		15,000.00	34,772,202.72	2,277,000.00
Dried Fish/L.Rukwa	134.43		464,037.93	1,075,708,064.93	158,273,757.84
Dried Furu / L. Manyara	10.6		31,500.00	72,450,000.00	4,842,400.00
Dried Furu/L.Vict	787.06		469,772.52	1,146,831,198.98	292,292,584.25
Dried Maws	541.5		56,962,299.39	129,089,603,145.18	3,925,303,441.11
Dried Offcuts	153.58		19,047.40	43,826,436.66	35,041,800.00
Dried Sangara/Kayabo	969.33		376,882.66	881,925,133.48	761,898,399.84
Dried shark	0.42		504.00	1,159,200.00	1,005,100.00
Dried Skin	0.0004		920.32	2,116,736.00	950
Dried Uduvi/L.Vict	245.61		38,983.01	93,348,726.38	16,374,440.91
Farmed Prawns	43.2		330,045.60	772,323,963.74	4,775,649.03
Fish Steaks	0.007		16,380.37	38,330,913.20	8,100.00

Fresh Fillets	7,274.17		34,434,015.59	77,144,723,549.97	3,860,573,820.09
Fresh Fish Chest	97		17,609.00	40,508,920.24	11,157,750.00
Fresh Fish Frames	79		15,400.00	35,419,072.00	3,634,151.20
Fresh Fish heads	84		16,560.90	38,919,956	5,438,243
Fresh Fish/L. Tang.	39.65		90,263.77	211,221,942.14	36,592,787.84
Fresh H&G	724.48		2,564,426.41	5,896,995,616.32	585,882,725.63
Fresh Maws	1.74		15,160.00	34,876,254.26	7,608,961.97
Frozen Fillets	10,123.12		56,210,892.27	127,407,963,164.35	5,426,578,318.83
Frozen Fish Chest	1,089.88		543,790.20	1,272,497,505.51	159,200,601.55
Frozen Fish Heads	4,082.74		534,028.15	1,249,653,798.00	235,709,347.00
Frozen Fish Off cuts	105.33		46,220.00	108,157,217.08	24,246,858.08
Frozen H&G	723.71		3,182,810.25	7,621,557,431.36	610,004,261.30
Frozen Lobster	3.24		113,261.15	270,944,452.73	10,442,958.46
Frozen Maws	294.94		20,994,375.72	47,093,741,750.49	1,432,609,981.21
Frozen Octopus	1,048.58		14,164,387.02	30,830,332,009.18	1,922,421,199.83
Frozen Offcuts	613.03		520,404.26	1,217,773,182.94	154,640,456.01
Frozen Prawns	87.97		1,852,202.73	4,442,971,291.80	62,027,392.56
Frozen Squids	12.73		8,549,283.49	17,689,530,287.09	21,667,658.00
Live Crabs	275.35		11,677,430.72	27,287,108,956.51	678,586,446.07
Live-Lobsters	48.72		1,165,694.03	2,796,523,291.57	264,755,079.81
Lobsters-Whole Frozen	0.18		631.83	1,478,515.24	579,703.32
Others	0.277		229.44	536,901.60	701,775.13
Prawns H/ON	0.45		8,100.00	18,630,000.00	414,178.20
Prawns Head-on 61 and above	1.91		955.00	2,183,390.00	4,196,041.95
Salted Fillets	0.014		49.84	114,677.86	8,000.00
Sea Shells	514.888		378,320.94	870,486,267	78,454,310
Smoked Nile Perch	0.4508		6,256.00	14,391,421.45	311,400.00
TOTAL	45,775.17	136,915.00	222,294,551.77	502,124,546,395.24	25,567,600,872.63

Source: Ministry of Livestock and Fisheries, 2019

Table 45: Export of fish and fishery products by Destination for 2019

Destination	Weight (MT)	Aquarium Fish	Fob (USD)	Fob (Tshs)	Royalty
Austria	1,760.58	9,245.00	1,979,943.36	4,737,632,892.93	128,061,236.77
Bankok	587.06	6,234.21	667,613.72	1,576,903,595.64	160,674,071.99
Botswana	1,173.72		11,680,750.72	27,294,805,204.05	688,438,681.99
Burundi	1,873.72		3,733,751.12	8,931,916,767.76	3,682,819,769.33
Canada	38.00		754,663.54	1,740,670,869.82	251,667,677.80
China	1,667.15	14,500.00	642,924.73	1,482,895,600.10	163,408,065.30
Congo	2,160.58		1,171,835.03	2,810,647,591.57	265,995,079.81
Denmark	606.86	8,753.11	15,400.00	35,419,072.00	3,634,151.20
Dubai	1,780.58		116,249.47	269,483,342.50	63,154,820.70
Eugypt	986.86		19,955.00	45,902,666.49	36,137,060.00
France	1,973.72	10,531.92	261,347.40	601,104,180.62	204,738,832.39
Germany	1,264.86	9,345.34	63,489.00	147,176,825.25	26,493,663.66
Hongkong	1,873.72	18,000.02	69,262.70	160,317,771.87	105,234,803.84
India	786.86	12,004.00	10,535.52	24,422,882.48	2,057,400.00
Isabenia	97.81		15,000.00	34,772,202.72	2,277,000.00
Israel	886.86	15,670.89	464,037.93	1,075,708,064.93	158,273,757.84
Kenya	2,147.44		56,962,299.39	129,089,603,145.18	3,925,303,441.11
Kuwait	587.56		469,772.52	1,146,831,198.98	292,292,584.25
Lebanon	313.43		31,500.00	72,450,000.00	4,842,400.00
Malawi	1,193.72		8,568,330.89	17,733,356,723.75	56,709,458.00
Malyasia	986.86		504	1,159,200.00	1,005,100.00
Netherland	1,280.29		376,882.66	881,925,133.48	761,898,399.84
Newzlend	1,867.15		14,685,711.60	32,050,221,928.12	2,077,062,605.84
Nyanmar	1,046.86		38,983.01	93,348,726.38	16,374,440.91
Porland	1,340.29	7,893.00	330,045.60	772,323,963.74	4,775,649.03
Portugal	1,273.72		400,957.30	923,208,601.65	78,773,810.00
Rusia	986.86		34,434,015.59	77,144,723,549.97	3,860,573,820.09
Rwanda	1,487.15		21,125,245.87	47,405,195,123.47	1,454,210,689.67

S.Africa	0.2		24	55,200.00	30,000.00
Singapore	2,074.01		56,210,892.27	127,407,963,164.35	5,426,578,318.83
Tailand	1,486.86		90,263.77	211,221,942.14	36,592,787.84
Taiwan	1,510.31	11,590.00	2,563,794.58	5,895,517,101.08	585,303,021.70
Turkey	670.20	8,569.51	15,160.00	34,876,254.26	7,608,961.97
U.A.E	316.88		16,560.90	38,919,956.00	5,438,243.00
U.S.A	1,867.15		543,790.20	1,272,497,505.51	159,200,601.55
Uganda	1,973.72		534,028.15	1,249,653,798.00	235,709,347.00
Uk	1,197.51	4,578.00	3,182,810.25	7,621,557,431.36	610,004,261.30
Zambia	647.99		46,220.00	108,157,217.08	24,246,858.08
Total	45,775.17	136,915.00	222,294,551.77	502,124,546,395.24	25,567,600,872.63

Source: Ministry of Livestock and Fisheries, 2019

Table 46: Export of fish and fishery products from Lake Victoria for 2019

Product	Weight (Tons)	Fob (USD)	Fob (Tshs)	Royalty
Dried chips	15.6	3,320.00	7,696,247.54	9,852,235.92
Dried Dagaal/ L. Vict	9,511.65	3,733,751.12	8,931,916,767.76	3,682,819,769.33
Dried Fish Chests	301.58	19,955.00	45,902,666.49	36,137,060.00
Dried fish frame	440.6	63,489.00	147,176,825.25	26,493,663.66
Dried Fish Heads	2,992.79	261,347.40	601,104,180.62	204,738,832.39
Dried Fish Meal/L.Vict	1,900.27	69,262.70	160,317,771.87	105,234,803.84
Dried Furu/L.Vict	787.06	469,772.52	1,146,831,198.98	292,292,584.25
Dried Maws	541.5	56,962,299.39	129,089,603,145.18	3,925,303,441.11
Dried Offcuts	153.58	19,047.40	43,826,436.66	35,041,800.00
Dried Sangara/Kayabo	969.33	376,882.66	881,925,133.48	761,898,399.84
Dried Skin	0.0004	920.32	2,116,736.00	950
Dried Uduvi/L.Vict	245.61	38,983.01	93,348,726.38	16,374,440.91
Fish Steaks	0.007	16,380.37	38,330,913.20	8,100.00
Fresh Fillets	7,274.17	34,434,015.59	77,144,723,549.97	3,860,573,820.09
Fresh Fish Chest	97	17,609.00	40,508,920.24	11,157,750.00
Fresh Fish Frames	79	15,400.00	35,419,072.00	3,634,151.20
Fresh Fish heads	84	16,560.90	38,919,956	5,438,243
Fresh H&G	724.48	2,564,426.41	5,896,995,616.32	585,882,725.63
Fresh Maws	1.74	15,160.00	34,876,254.26	7,608,961.97
Frozen Fillets	10,123.12	56,210,892.27	127,407,963,164.35	5,426,578,318.83
Frozen Fish Chest	1,089.88	543,790.20	1,272,497,505.51	159,200,601.55
Frozen Fish Heads	4,082.74	534,028.15	1,249,653,798.00	235,709,347.00
Frozen Fish Off cuts	105.33	46,220.00	108,157,217.08	24,246,858.08
Frozen H&G	723.71	3,182,810.25	7,621,557,431.36	610,004,261.30
Frozen Maws	294.94	20,994,375.72	47,093,741,750.49	1,432,609,981.21

Frozen Offcuts	613.03	520,404.26	1,217,773,182.94	154,640,456.01
Salted Fillets	0.014	49.84	114,677.86	8,000.00
Smoked Nile Perch	0.4508	6,256.00	14,391,421.45	311,400.00
Total	43,153.18	181,137,409.47	410,367,390,267.24	21,613,800,957.12

Source: Ministry of Livestock and Fisheries, 2019

Table 47: Trend of Nile perch export performance from 2008– 2019

Year	Weight (Tons)	Value (US \$)	Value (TShs.)	Royalty in (TShs.)
2008	38,721.42	153,740,723.30	180,366,779,818.20	5,412,912,979.20
2009	28,721.58	130,644,300.10	168,368,910,379.90	4,628,409,654.50
2010	27,229.47	139,666,995.10	194,012,069,313.90	4,509,670,993.80
2011	25,426.16	127,601,694.31	197,899,741,508.31	4,299,987,312.20
2012	28,951.09	141,189,161.64	220,149,518,645.58	4,967,311,025.08
2013	33,732.84	124,551,584.52	197,578,220,798.56	5,085,642,905.53
2014	24,473.49	665,856,773.02	1,131,575,531,076.13	4,569,314,169.58
2015	23,000.58	250,279,107.21	528,534,413,018.87	11,251,591,352.11
2016	26,044.66	177,338,054.38	345,417,803,263.42	6,964,514,349.11
2017	26,679.95	168,554,018.86	376,572,501,425.10	7,057,407,120.52
2018	32,166.95	179,522,958.87	409,654,290,064.54	9,689,153,198.04
2019	32,608.86	176,894,902.82	400,195,293,574.12	17,622,314,162.63

Source: Ministry of Livestock and Fisheries, 2019

Table 48: Export of fish and fishery products from Marine waters for 2019

Product	Weight (Tons)	Fob (Usd)	Fob (Tshs)	Royalty
Dried Dagaa/ Marine				
Dried fins	0.02	24.00	55,200.00	30,000.00
Dried shark	0.42	504.00	1,159,200.00	1,005,100.00
Farmed Prawns	43.2	330,045.60	772,323,963.74	4,775,649.03
Frozen Lobster	3.24	113,261.15	270,944,452.73	10,442,958.46

Frozen Octopus	1,048.58	14,164,387.02	30,830,332,009.18	1,922,421,199.83
Frozen Prawns	87.97	1,852,202.73	4,442,971,291.80	62,027,392.56
Frozen Squids	12.73	8,549,283.49	17,689,530,287.09	21,667,658.00
Live Crabs	275.35	11,677,430.72	27,287,108,956.51	678,586,446.07
Live-Lobsters	48.72	1,165,694.03	2,796,523,291.57	264,755,079.81
Lobsters-Whole Frozen	0.18	631.83	1,478,515.24	579,703.32
Others	0.277	229.44	536,901.60	701,775.13
Prawns H/ON	0.45	8,100.00	18,630,000.00	414,178.20
Prawns Head-on 61 and above	1.91	955.00	2,183,390.00	4,196,041.95
Sea Shells	514.888	378,320.94	870,486,267	78,454,310
Total	2,261.45	38,874,028.55	86,444,215,841.86	3,207,565,859.06

Source: Ministry of Livestock and Fisheries, 2019

Table 44: Export of fish and fishery products from Lake Tanganyika 2019

Product	Weight (Tons)	Aquarium Fish	Fob (USD)	Fob (Tshs)	Royalty
Aquarium Fish/L. Tang		86,516.00	667,613.72	1,576,903,595.64	160,674,071.99
Dried Dagaa/ L.Tang	91.88		754,663.54	1,740,670,869.82	251,667,677.80
Dried Fish (Mgebuka)/L.Tang.	32.34		116,249.47	269,483,342.50	63,154,820.70
Total	124.22	86,516.00	1,538,526.73	3,587,057,807.96	475,496,570.49

Source: Ministry of Livestock and Fisheries, 2019

Table 50: Export of fish and fishery products from Lake Nyasa 2019

Product	Weight (Tons)	Aquarium Fish	Fob (USD)	Fob (Tshs)	Royalty
Aquarium Fish/L. Nyasa		50,399.00	127,108.80	293,183,085.88	65,454,140.89
Dried Dagaa/L. Nyasa	2.07		6,141.00	14,124,300.00	1,240,000.00
Total	2.07	50,399.00	133,249.80	307,307,385.88	66,694,140.89

Source: Ministry of Livestock and Fisheries, 2019

Table 51: Export of fish and fishery products from Lake Rukwa 2019

Product	Weight (Tons)	Fob (USD)	Fob (Tshs)	Royalty
Dried Fish/L.Rukwa	134.43	464,037.93	1,075,708,064.93	158,273,757.84
Total	134.43	464,037.93	1,075,708,064.93	158,273,757.84

Source: Ministry of Livestock and Fisheries, 2019

Table 52: Export of fish and fishery fromr Lake Manyara 2019

Product	Weight (Tons)	Fob (USD)	Fob (Tshs)	Royalty
Dried Fish Meal/L. Manyara	45	10,535.52	24,422,882.48	2,057,400.00
Dried Fish/L. Manyara	5	15,000.00	34,772,202.72	2,277,000.00
Dried Furu / L. Manyara	10.6	31,500.00	72,450,000.00	4,842,400.00
Total	60.60	57,035.52	131,645,085.20	9,176,800.00

Source: *Ministry of Livestock and Fisheries, 2019*

Table 5345: Trend of Export of fish and fishery products from 2012-2019

Years	Products		Value in US D	Values in TShs	Royalty TShs
	Weight (Tons)	Aquarium Fish			
2012	41,394.27	45,550.00	163,299,365.50	254,901,017,111.31	6,819,926,007.14
2013	38,573.61	44,260.00	147,659,778.56	234,884,628,955.92	6,117,769,193.74
2014	43,354.40	42,100.00	188,101,262.01	314,489,903,877.12	7,490,632,355.15
2015	41,059.45	87,630.00	189,329,412.94	379,250,998,566.00	13,097,411,199.19
2016	39,691.46	65,841.00	257,257,100.48	526,985,019,569.27	14,302,761,906.89
2017	36,063.23	101,110.00	182,450,277.75	406,568,122,271.47	10,446,850,538.58
2018	44,939.79	63,978.00	239,680,014.56	546,993,779,393.01	13,520,367,822.26
2019	45,775.17	136,915.00	222,294,551.77	502,124,546,395.24	25,567,600,872.63

Source: Ministry of Livestock and Fisheries, 2019

Table 46: List of Potential exporters of fish and fishery products for 2019

S/N	Location/region	Name of fish processing establishment	installed capacity tons/day	Current capacity Tons./day	Types of product
1	Magu	Delish Foods Ltd	10	3	Frozen fillets
		P.O.BOX 11346,			Frozen and Chilled fillets,
		ISANGIJO, MAGU			Headed & Gutted
		Mobile: +255 622 531 414			and Frozen Fish maws.
		Email: hussein@aloo.com			
2	Mwanza	Nile Perch Fisheries Ltd	175	40	Nile Perch Products:
		ADDRESS: P. O. Box 1753,			Frozen and Chilled fillets,
		MWANZA.			Headed & Gutted
		Tel: 255 28 2570329			and Frozen Fish maws.
		Fax: 255 28 2570430			
E-mail: info@nileperchfisheries.com					
3	Mwanza	Tanzania Fish Processors Ltd	120	40	Nile Perch Products:

		ADDRESS: P. O. Box 3001, MWANZA. Tel: 255 28 2550105 Fax: 255 28 2550482 Mobile: 255 784 233650 E-mail: tfpl@alphatz.com			Frozen and Chilled fillets, Headed & Guttled and Frozen Fish maws.
4	Mwanza	Victoria Perch Ltd ADDRESS: P. O. Box 348, MWANZA. Tel: 255 28 2560868 Fax: 255 28 2561184 Mobile: 255 784 522276 255 784 521027 E- mail: mwanzafish@africaonline.co.tz	45	25	Nile Perch Products: Frozen and Chilled fillets, Headed & Guttled Frozen Fish maws. and Belly Flaps, Fish Chest
5	Mwanza	Omega Fish Ltd ADDRESS: P.O.BOX 94 MWANZA TEL+.255-28-2560665/ 2560336 FAX.+255-28-2560561 E-mail: omegafish@africaonline.co.tz	75	15	Nile Perch Products: Frozen and Chilled fillets, Headed & Guttled and Frozen Fish maws.
6	Mwanza	Nature's Fish Ltd ADDRESS: P.O.BOX 2589, MZA TEL: FAX: +255 784 500327	50	15	Nile Perch Products: Frozen and Chilled fillets, and Frozen Fish maws. Frozen and fresh H&G
7	Musoma	Musoma Fish Processors ADDRESS: P. O. Box 1149, MUSOMA. Tel: 255 28 2622988/9 Fax: 255 28 2622112	30	10	Nile Perch Products: Frozen and Chilled fillets, and Frozen Fish maws.

		Mobile: 255 7 13 275225			
		255 713 298937			
		E-mail: mspl@alphatz.com			
8	Bukoba	Kagera Fish Company Ltd ADDRESS: P. O. Box 180 BUKOKA. Tel: 255 744 000888/660963 E.mail kagera@yahoo.co.uk	35	3	Nile Perch Products: Frozen and Chilled fillets, and Frozen Fish maws.
9	Bukoba	Vic Fish Ltd ADDRESS: P. O. Box 1139, BUKOKA. Tel: 255 28 220565/41/63 Fax: 255 28 220566 Mobile: 255 784 780633 E-mail: admin.vicbkb@naturersbountytz.com	60	25	Frozen and Chilled fillets, and Frozen Fish maws.
10	Bukoba	Faruk Gennera Supplies, P.O.Box 10, Kemondo, Bukoba TEL. +255625 097 533/759 885 205 Email. shaffiisaack@gmail.com	2	0.5	Frozen fillets, Frozen H&G
11	Dar es Salaam	Alphakrust Ltd ADDRESS: P.O BOX 8316 DAR ES SALAAM Tel: 255 22 2128854 255 22 2128828 Fax: 255 51 111069 Mobile: 255 784 900885 ganeshan.vedagiri@tz.alphaafrica.com DARE S SALAAM	-	15	Products: Octopus Squids, Crabs and Lobsters , Live Lobsters
12	Dar es Salaam	Bahari Foods Ltd ADDRESS: P. O Box 3978 DAR ES SALAAM Tel: 255 22 2602504/5	-	8	Products: Plant Frozen prawns, Sword Fish, Octopus Squids, Chilled Tuna Loins and Sea Frozen Prawns.

		Fax: 255 22 2602490			
		Mobile: 255 784 780633			
		bhagat@vicfish.com bahari@naturesbounty.tz.com			
13	Pwani	Tanpesca Mafia Plant Ltd ADDRESS: P.O Box 8316 DAR ES SALAAM Tel: 255 22 2128854 Fax: 255 51 111069 Mobile: 255 784 900885 ganeshan.vedagiri@tz.alphaafrica.com www.alphaafrica.com	20	15	Products: Plant Frozen prawns, Cuttle Fish, Octopus, Squids, Crabs and Lobsters
14	Dar es Salaam	KAWTHAR SEA FOOD EXPORT S. L. P. 54182 DAR ES SALAAM Tel: 0782 533 000	-	3.2	Products: Plant Frozen prawns, Cuttle Fish, Octopus, Squids, Crabs and Lobsters
15	Tanga	TANPESCA LTD TANGA S. L. P 8316 DAR ES SALAAM Tel: 255 22 2128854 255 22 2128828 Fax: 255 51 111069 Mobile: 255 784 900885 ganeshan.vedagiri@tz.alphaafrica.com www.alphaafrica.com	-	10	Products: Plant Frozen prawns, Sword Fish, Octopus Squids, Chilled Tuna Loins and Sea Frozen Prawns
16	Mkuranga	Abajuko Enterprises Ltd P. O Box 42129 DAR ES SALAAM Phone: 22 2856600 Mobile: 0784 267 358 0754 267 358 abajukoseafoods1@gmail.com	-	10	Products: Plant Frozen prawns, Cuttle Fish, Octopus, Squids, Crabs and Lobsters
17	Dar es Salaam	Biaghat (Hired by Serengeti)			

		Turkey) P. O Box 3943 DAR ES SALAAM			
18	Dar es Salaam	INSTADAR) (ABDL) P. O Box 11430 DAR ES SALAAM			

Source: Ministry of Livestock and Fisheries, 2019

2.4 Import fisheries import data

In 2019, the country received a total of 5.8 MT worth 116.59 Million TShs from outside the country. Fish importation is done not because of the shortage of fish in the country but mainly due to preferences of a certain type of fish which are not available in the county for the Hotels and supermarket purposes (Table 55). However, the trend of fish importation shows to decrease yearly (Table 56).

Table 47: the status of fish import in 2019

Product	Weight (MT)	Value		Royalty (TShs)	Country of Origin
		USD	Fob (TSH)		
Frozen Salmon	2.48	21,091.96	48,511,504.27	15,678,046.79	China and UK
Dry Fish	1.31	3,936.75	9,054,536.36	7,294,802.64	Mozambique
Smoked Salmon	2.19	25,664.41	59,028,133.63	14,037,892.60	Norway
Total	5.98	50,693.12	116,594,174.26	37,010,742.03	

Table 5648: Trend of Export of fish and fishery products from 2012-2019

Year	Weight (MT)	CIF V a l u e		Royalty (TShs)
		US \$	TShs	
2012	4,885.69	3,512,976.00	5,507,054,266.00	1,681,166,953.00
2013	6,642.40	5,718,245.60	9,027,183,853.10	2,649,611,644.00
2014	6,792.26	6,009,654.90	9,889,823,440.20	2,818,169,085.90
2015	16,743.96	15,338,684.90	32,211,238,339.30	7,247,564,250.00
2016	13,971.66	12,749,582.82	26,774,123,924.68	8,519,807,734.03
2017	22,961.67	25,065,355.98	56,121,332,048.16	12,869,006,181.43
2018	22,752.38	19,571,180.00	44,896,287,034.70	12,929,314,630.85
2019	5.98	50,693.12	116,594,174.26	37,010,742.03

3.0 CONCLUSION AND WAY FORWARD

Data used on the assessment of the overall performance of the fisheries sector are usually derived from the Fisheries Frame Survey and Catch Assessment Survey (CAS). Fisheries Frame Survey is a census-based approach in which data and information related to all aspects of a certain fishery is collected. The data and information collected in this survey include fishing vessels, fishing gears, fishers and other beach based fisheries related services and facilities (fish landing sites, fish markets, cold store facilities e.t.c). On the other hand, Catch Assessment Survey is a daily routine catch data collection from a specified landing sites within a specified time from certain water bodies. The data and information gathered from Fisheries Frame Survey used as a raising factor during estimation of total fish catch of a certain water body using data from Catch Assessment Survey.

These two Surveys together, therefore provide the opportunity for gathering data and information such as fishing efforts, total catch and other supplementary fisheries related information which are useful for future planning purposes and decision making towards the sustainability of the fishery and other socio-economics issues of the fishing stakeholders and the national at large. Other information and data which usually collected during survey includes fish consumption, export and import. All these kind of data and information are useful in explaining the performance of the Fisheries Sector at a specified area and time. However, due to reliable financial constraints, these surveys are not conducted as required and prevent the ability of the Ministry to have a reliable, updated and accurate fisheries data and information.

4,0 WAY FORWARD

Basing on the above-mentioned facts, the Ministry of Livestock and Fisheries should put an extra effort to improve system for fisheries data and information collection. Setting aside enough fund to undertake frequent Fisheries Frame survey and Catch Assessment Survey which will enable to have up to date and reliable data. This efforts should go along with efforts to sensitize LGAs to participate fully in this excises by setting aside the fund and staff to undertake fisheries data collection

involving BMUs and conduct thorough inventory of all minor water bodies in order to have a representative samples on the Tanzania fishery. Furthermore, use of mobile in data collection (e-CAS) should be enhanced at all levels.